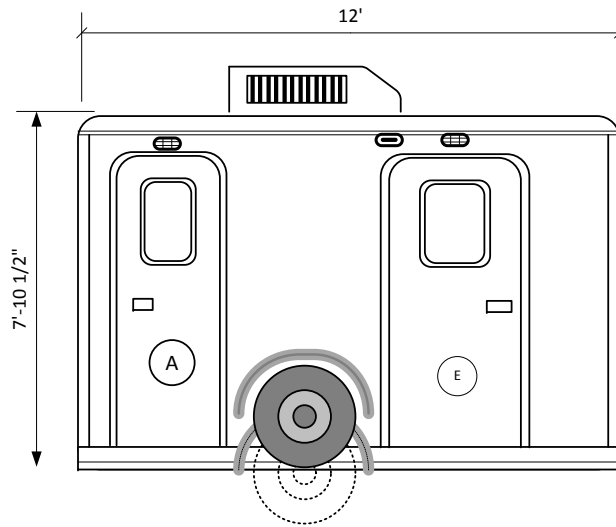


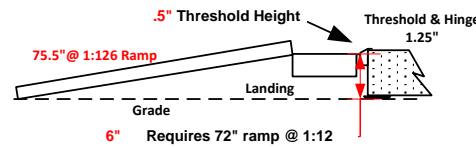
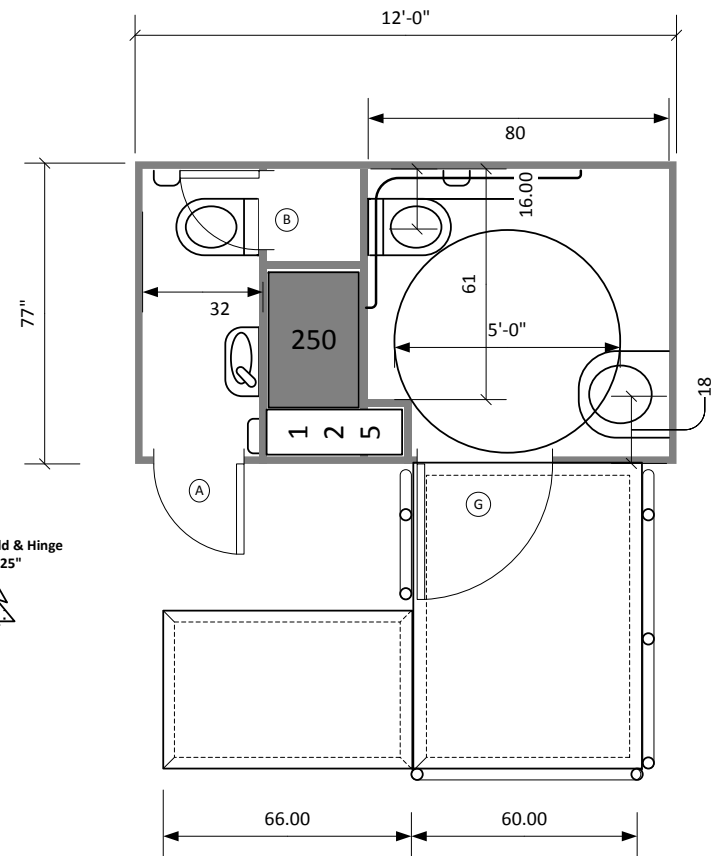


Omega Lite 12 ADA 2ST



- (A) 78"x24" radius RH
- (B) 48"x21" radius LH
- (C) 32"x49" top hinge
- (D) 48"x24" radius RH
- (E) 80"x36" radius RH
- (F) 78"x24" radius LH
- (G) 80"x 36" radius LH

ADA compliant to 2010 ADA Guidelines
 Lowers to ground & Container Shippable
 Removable trailer tongue
 Porcelain wall hung fixtures
 125 fresh water 250 waste storage
 Rotationally molded vertical tanks
 Stainless Steel Towel, tissue and soap dispensers
 Rubber coin flooring
 Electric Brakes
 2 Jets Marine Toilets & OPTIMA VOD Vacuumator
 Uses around one pint per flush
 Air Conditioned 15,000btu / 5,500 btu heat
 Ducted ventilation
 Obscure skylights in radius doors
 Vandal resistant pebble finished wall panels
 Double foil radiant barrier insulation
 4000 pound retractable TorFlex suspension
 16 x 6.75 10 ply Radial Tires & wet bearings
 All metal and composite construction
 LED 50,000 hour burn automatic lighting and trailer lighting
 Dawn to dusk LED porch lighting
 Liquefies all waste paper and hygienic products
 4 hand crank Leveling Jacks 16,000 lb. max.
 Self Pumping to Sewer Tap up to 100 yards w/10' head
 One 30 amp/120vac power inlet
 Aluminum ADA ramp w/Stainless steel railing
 Aluminum fenders and flush door latches
 4" curbs are optional on ADA landing
 Optional Changing station



Handrails

Top Height 36" above Platform

Top of Cross Bars 14" below bottom of Top Rail. Railing
 1.5" OD Diameter and slides into 4" piece of 1.5" ID
 pipe welded to landing.

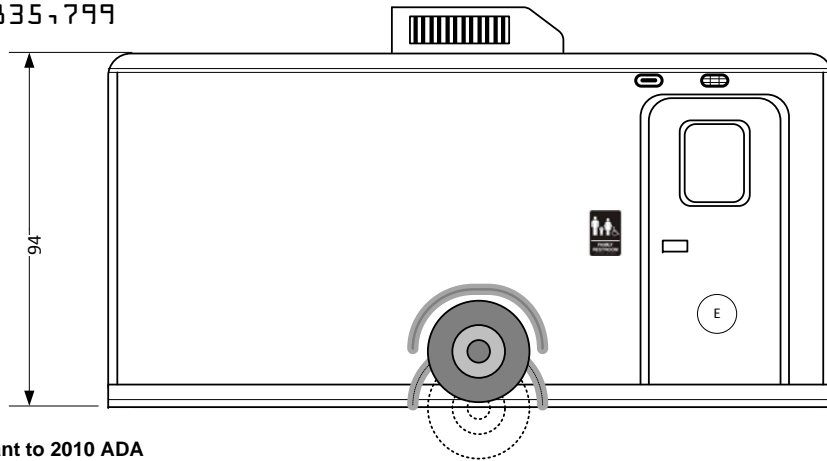
This document is the property of and contains unpublished proprietary information and trade secrets of A.M.S. Global Inc. By accepting possession of the document the recipient agrees to make no copies transcriptions or any use of this document or the information contained herein except as authorized by A.M.S. Global Inc. and further agrees to safe keep this document and return in to A.M.S. Global Inc. upon demand.

These restrooms are designed to be compliant with all current guidelines as we are aware of. Many guidelines have gray areas and points open to interpretation. Different entities may have differed interpretations or local differences. We suggest getting approvals of final plans from the authorities in the local the unit will be placed

Approved by _____



18-46835-799

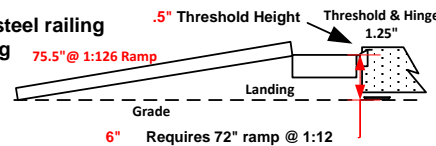
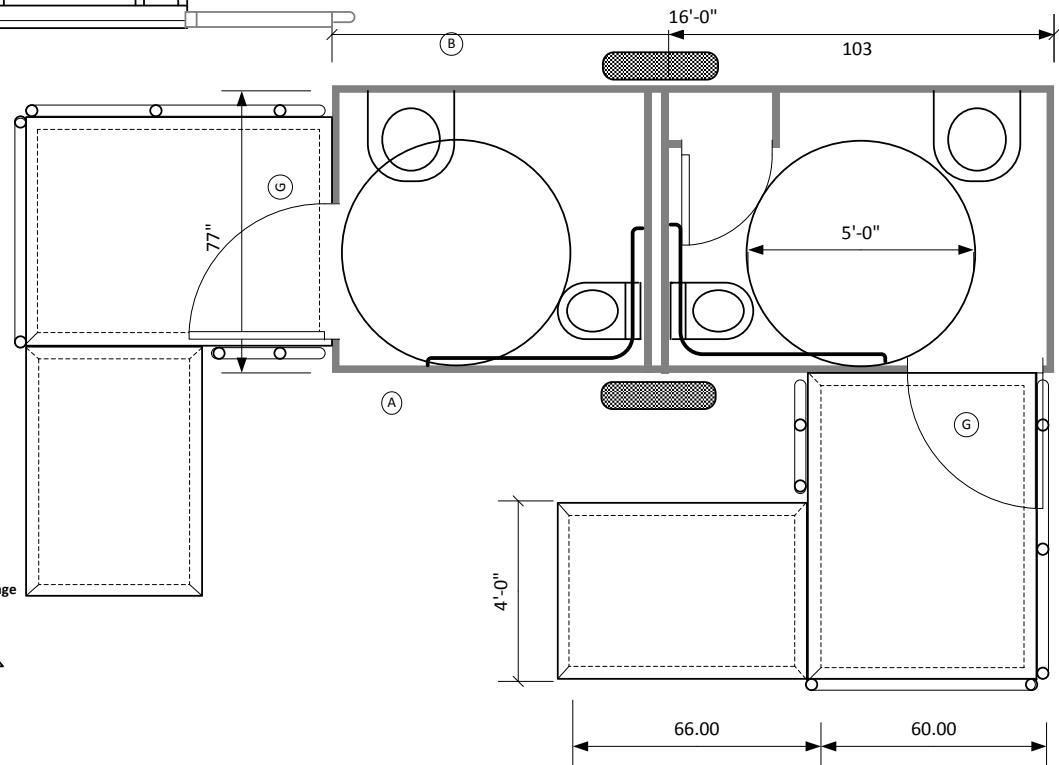


- Ⓐ 78"x24" radius RH
- Ⓑ 48"x24" radius LH
- Ⓒ 32"x49" top hinge
- Ⓓ 48"x24" radius RH
- Ⓔ 78"x36" radius RH
- Ⓕ 78"x24" radius LH
- Ⓖ 80"x 36" radius RH



Omega Lite 16 ADA 2ST Direct

- ADA compliant to 2010 ADA
- Lowers to ground & Container Shipable
- Removeable trailer tongue
- Removable Axle, Tires & Fender
- Porcelain wall hung fixtures
- Stainless Steel Towel, tissue and soap dispensers
- Rubber coin over steel flooring Electric Brakes
- 3 Jets Marine Toilets & OPTIMA VOD Vacuumator
- Uses around one pint per flush
- Heat Pump or Air Conditioned 15,000btu / 5,500 btu heat
- Ducted ventilation 4500 watt aux. heater
- Obscure skylights in radius doors
- Vandal resistant pebble finished wall panels
- Double foil radiant barrier insulation
- Retractable TorFlex suspension
- 16 x 6.75 14 ply Radial Tires & Easy-Lube bearings
- All metal and composite construction
- LED 50,000 hour burn automatic lighting and trailer lighting
- Dawn to dusk LED porch lighting
- Liquefies all waste paper and hygienic products
- Self Pumping to Sewer Tap up to 100 yards w/10' head
- One30 amp/120 ac power inlet
- 2 Aluminum ADA ramp w/Stainless steel railing
- 4" curbs are optional on ADA landing



Handrails

Top Height 36" above Platform

Top of Cross Bars 14" below bottom of Top Rail. Railing
1.5" OD Diameter and slides into 4" piece of 1.5" ID
pipe welded to landing.

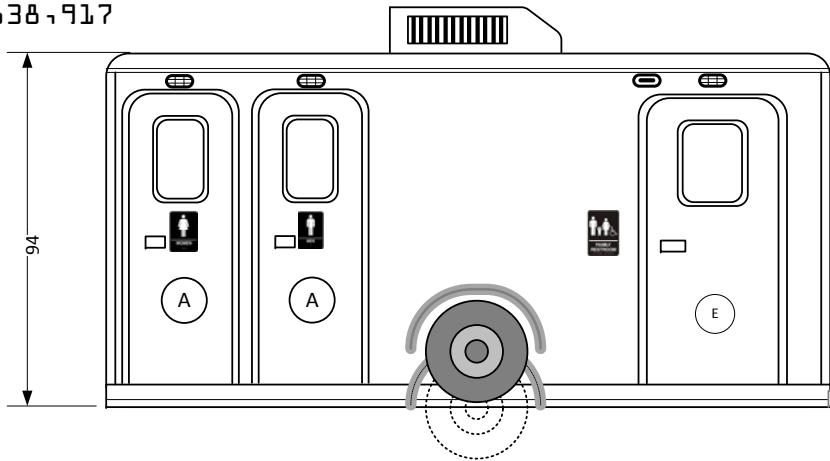
These restrooms are designed to be compliant with all current guidelines as we are aware of. Many guidelines have gray areas and points open to interpretation. Different entities may have differed interpretations or local differences. We suggest getting approvals of final plans from the authorities in the local the unit will be placed

This document is the property of and contains unpublished proprietary information and trade secrets of A.M.S. Global Inc. By accepting possession of the document the recipient agrees to make no copies transcriptions or any use of this document or the information contained herein except as authorized by A.M.S. Global Inc. and further agrees to safe keep this document and return in to A.M.S. Global Inc. upon demand.

Approved by _____



18-85838-917

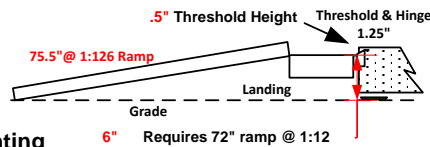
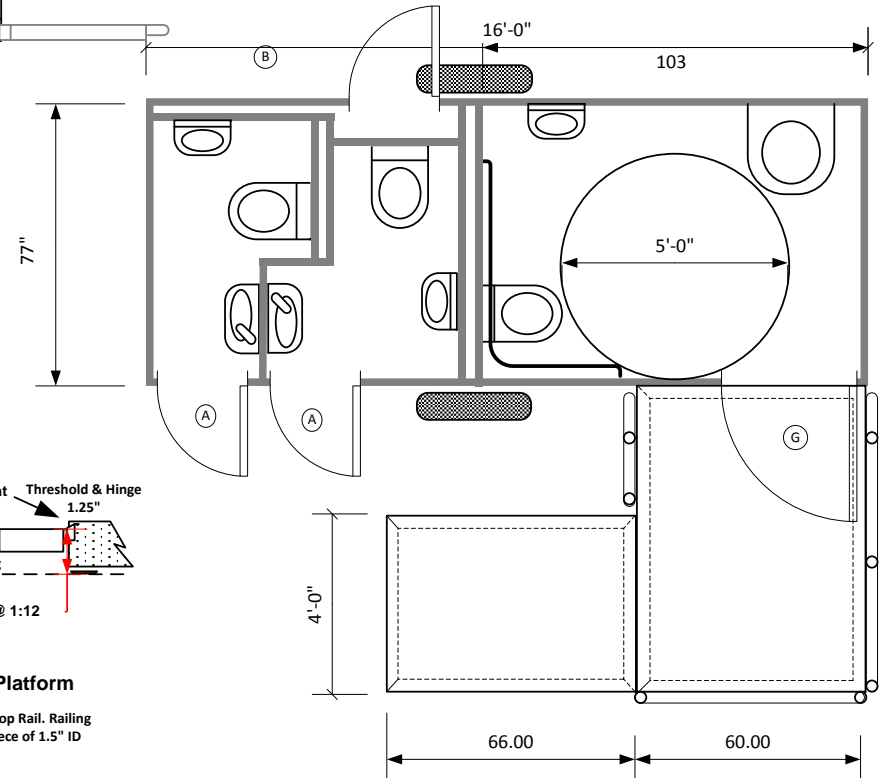


- Ⓐ 78"x24" radius RH
- Ⓑ 48"x24" radius LH
- Ⓒ 32"x49" top hinge
- Ⓓ 48"x24" radius RH
- Ⓔ 78"x36" radius RH
- Ⓕ 78"x24" radius LH
- Ⓖ 80"x 36" radius RH



Omega Lite 16 ADA 3ST3U Direct

- ADA compliant to 2010 ADA Guidelines
- Lowest to ground & Container Shipable
- Removeable trailer tongue
- Removable Axle, Tires & Fender
- Porcelain wall hung fixtures
- Stainless Steel Towel, tissue and soap dispensers
- Rubber coin over steel flooring Electric Brakes
- 3 Jets Marine Toilets & OPTIMA VOD Vacuumator
- Uses around one pint per flush with auto flush urinal
- Heat Pump or Air Conditioned 15,000btu / 5,500 btu heat
- Ducted ventilation 4500 watt aux. heater
- Obscure skylights in radius doors
- Vandal resistant pebble finished wall panels
- Double foil radiant barrier insulation
- Retractable TorFlex suspension
- 16 x 6.75 14 ply Radial Tires & Easy-Lube bearings
- All metal and composite construction
- LED 50,000 hour burn automatic lighting and trailer lighting
- Dawn to dusk LED porch lighting
- Liquefies all waste paper and hygienic products
- Self Pumping to Sewer Tap up to 100 yards w/10' head
- One 50 amp/240 ac power inlet
- Aluminum ADA ramp w/Stainless steel railing
- 4" curbs are optional on ADA landing



Handrails

Top Height 36" above Platform

Top of Cross Bars 14" below bottom of Top Rail. Railing 1.5" OD Diameter and slides into 4" piece of 1.5" ID pipe welded to landing.

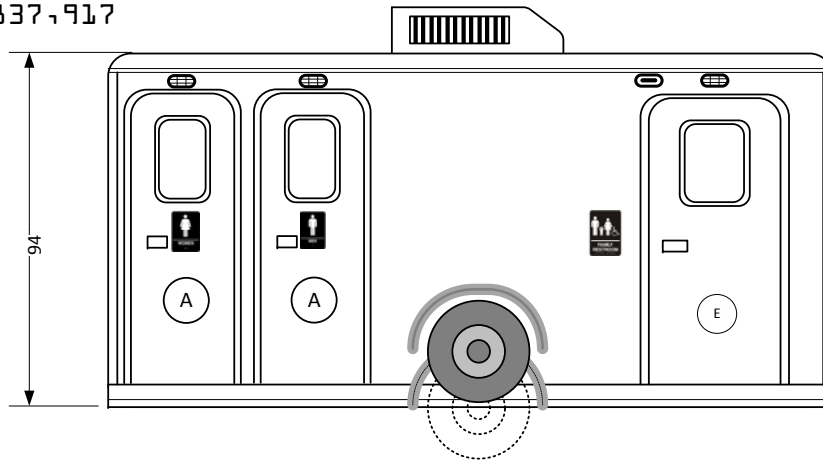
These restrooms are designed to be compliant with all current guidelines as we are aware of. Many guidelines have gray areas and points open to interpretation. Different entities may have differed interpretations or local differences. We suggest getting approvals of final plans from the authorities in the local the unit will be placed

This document is the property of and contains unpublished proprietary information and trade secrets of A.M.S. Global Inc. By accepting possession of the document the recipient agrees to make no copies transcriptions or any use of this document or the information contained herein except as authorized by A.M.S. Global Inc. and further agrees to safe keep this document and return in to A.M.S. Global Inc. upon demand.

Approved by _____



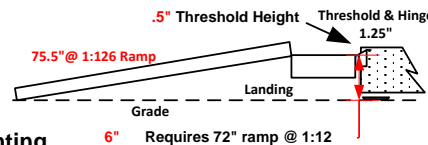
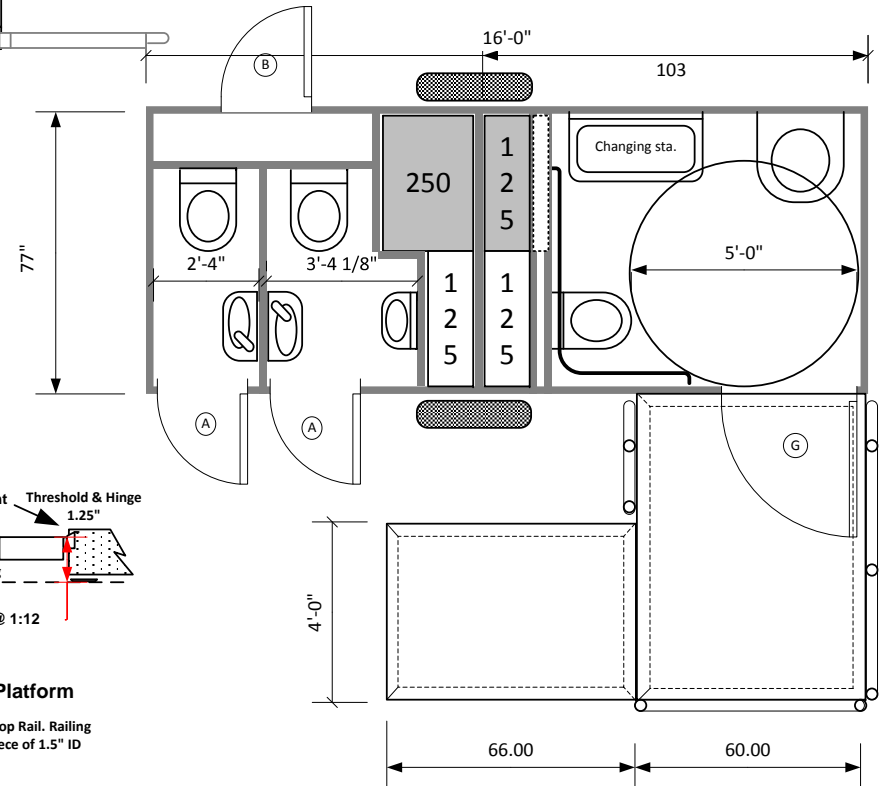
18-85837-917



- Ⓐ 78"x24" radius RH
- Ⓑ 48"x24" radius LH
- Ⓒ 32"x49" top hinge
- Ⓓ 48"x24" radius RH
- Ⓔ 78"x36" radius RH
- Ⓕ 78"x24" radius LH
- Ⓖ 80"x 36" radius RH

Omega Lite 16 ADA 3ST1U

- ADA compliant to 2010 ADA Guidelines
- Lowers to ground & Container Shipable
- Removeable trailer tongue
- Porcelain wall hung fixtures
- 625 gl tank storage Custom to your specifications
- Rotationally molded vertical tanks
- Stainless Steel Towel, tissue and soap dispensers
- Rubber coin over steel flooring Electric Brakes
- 3 Jets Marine Toilets & OPTIMA VOD Vacuumator
- Uses around one pint per flush with auto flush urinal
- Heat Pump or Air Conditioned 15,000btu / 5,500 btu heat
- Ducted ventilation 4500 watt aux. heater
- Obscure skylights in radius doors
- Vandal resistant pebble finished wall panels
- Double foil radiant barrier insulation
- Retractable TorFlex suspension
- 16 x 6.75 14 ply Radial Tires & Easy-Lube bearings
- All metal and composite construction
- LED 50,000 hour burn automatic lighting and trailer lighting
- Dawn to dusk LED porch lighting
- Liquefies all waste paper and hygienic products
- Self Pumping to Sewer Tap up to 100 yards w/10' head
- One 50 amp/240 ac power inlet
- Aluminum ADA ramp w/Stainless steel railing
- 4" curbs are optional on ADA landing
- Changing station standard
- 4000 – 3500 flushes at Max



Handrails

Top Height 36" above Platform

Top of Cross Bars 14" below bottom of Top Rail. Railing 1.5" OD Diameter and slides into 4" piece of 1.5" ID pipe welded to landing.

These restrooms are designed to be compliant with all current guidelines as we are aware of. Many guidelines have gray areas and points open to interpretation. Different entities may have differed interpretations or local differences. We suggest getting approvals of final plans from the authorities in the local the unit will be placed

This document is the property of and contains unpublished proprietary information and trade secrets of A.M.S. Global Inc. By accepting possession of the document the recipient agrees to make no copies transcriptions or any use of this document or the information contained herein except as authorized by A.M.S. Global Inc. and further agrees to safe keep this document and return in to A.M.S. Global Inc. upon demand.

Approved by _____



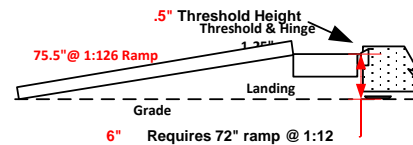
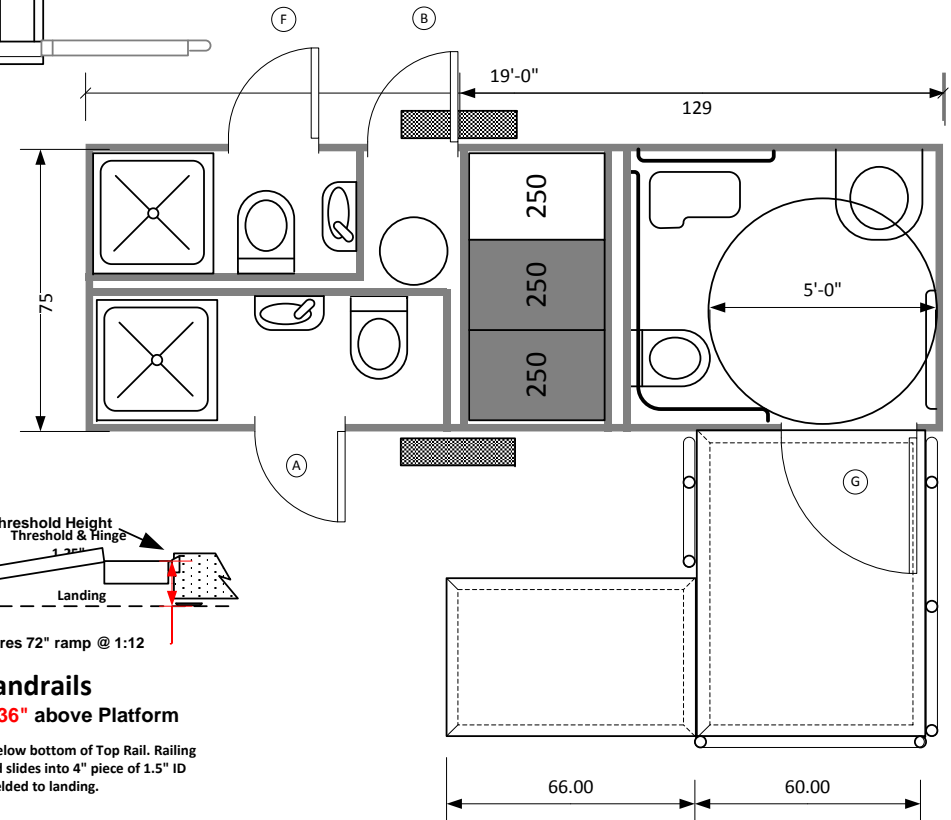
23,48345,571



- Ⓐ 78"x24" radius RH
- Ⓑ 48"x24" radius LH
- Ⓒ 32"x49" top hinge
- Ⓓ 48"x24" radius RH
- Ⓔ 78"x36" radius RH
- Ⓕ 78"x24" radius LH
- Ⓖ 80"x 36" radius RH

Omega Lite 19 ADA 3STS

- ADA compliant to 2010 ADA Guidelines
- Lowers to ground & Container Shipable
- Removeable trailer tongue
- Porcelain wall hung fixtures
- 250 fresh water 500 waste storage
- Rotationally molded vertical tanks
- Stainless Steel Towel, tissue and soap dispensers
- Rubber coin over steel flooring
- Electric Brakes 6500 watts in room heat
- 3 Jets Marine Toilets & OPTIMA VOD Vacuumator
- Uses around one pint per flush
- Heat Pump** & Air Conditioned 15,000btu / 5,500 btu heat
- Ducted ventilation and 40 gallons Electric HW
- Three metered showers w/vandal-proof heads
- Obscure skylights in radius doors
- Vandal resistant pebble finished wall panels
- Double foil radiant barrier insulation
- 16,000 pound retractable suspension
- 16 x 6.75 14 ply Radial Tires & Easy-Lubet bearings
- All metal and composite construction
- LED 50,000 hour burn automatic lighting and trailer lighting
- Dawn to dusk LED porch lighting
- Liquefies all waste paper and hygienic products
- Self Pumping to Sewer Tap up to 100 yards w/10' head
- One 50 amp/240 power inlet
- Aluminum ADA ramp w/Stainless steel railing
- 4" curbs are optional on ADA landing
- Changing station & ADA welded shower bench
- 4000 – 3500 flushes at Max



Handrails

Top Height **36"** above Platform

Top of Cross Bars 14" below bottom of Top Rail. Railing 1.5" OD Diameter and slides into 4" piece of 1.5" ID pipe welded to landing.

These restrooms are designed to be compliant with all current guidelines as we are aware of. Many guidelines have gray areas and points open to interpretation. Different entities may have differed interpretations or local differences. We suggest getting approvals of final plans from the authorities in the local the unit will be placed

This document is the property of and contains unpublished proprietary information and trade secrets of A.M.S. Global Inc. By accepting possession of the document the recipient agrees to make no copies transcriptions or any use of this document or the information contained herein except as authorized by A.M.S. Global Inc. and further agrees to safe keep this document and return in to A.M.S. Global Inc. upon demand.

Approved by _____

