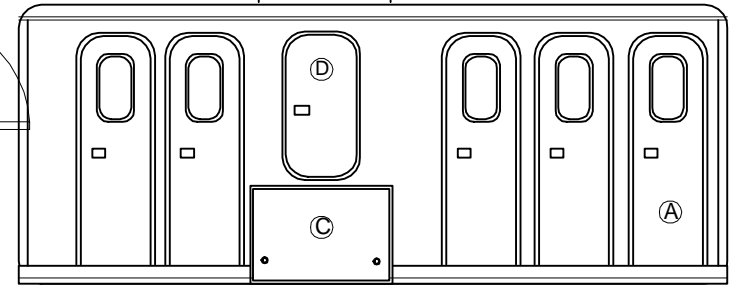


Omega 20 10ST

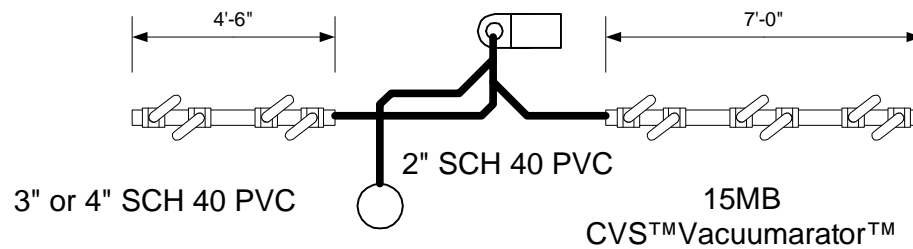


SIDE

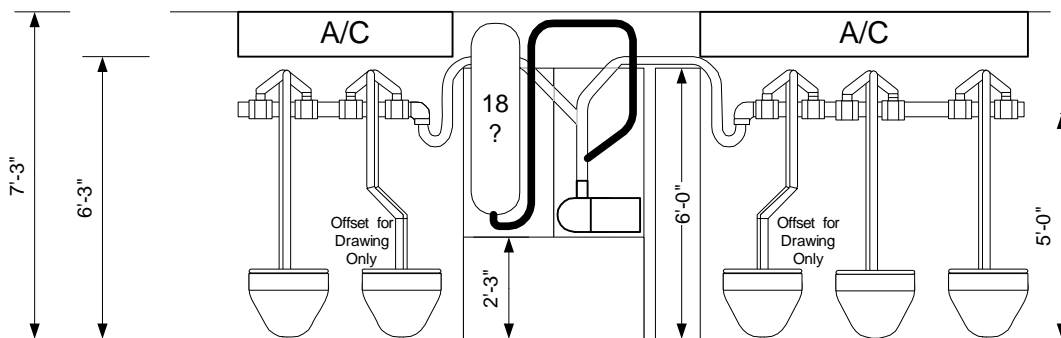
Openings

- (A) 78"x24" radius RH(5)
- (B) 48"x24" radius LH(1)
- (C) 32"x49" top hinge(2)
- (D) 48"x24" radius RH(1)
- (E) 60"x60" top hinge(1)
- (F) 78"x24" radius LH(5)
- (G) 78"x36" LH(1)
- (H) 23"x24" radius LH(1)
- (I) 23"x24" radius RH(1)

TOP



- 2000 flush capacity
- Lowers to ground
- Container Shipable
- Retractable tongue
- Hydraulic Electric Disk Brakes
- 10 Jet s™ Marine Toilets
- 250 gallon waste tank capacity
- 250 gallons fresh water storage
- Uses less than a quart per flush
- All Stainless Steel Dispensers
- Central ventilation system
- Obscure windows in radius doors
- 10,000 pound retractable suspension
- 17.5 x 6.75 Radial Tires 6000 lb 16 ply
- All metal and composite construction
- LED 50,000 hour burn lighting and trailer lighting
- Liquefies all waste paper and hygienic products
- Automatic Electric Leveling Jacks 16,000 lb max
- Self Pumping to Sewer Tap up to 100 yards w/10' head
- 240v 50 amp power requirement



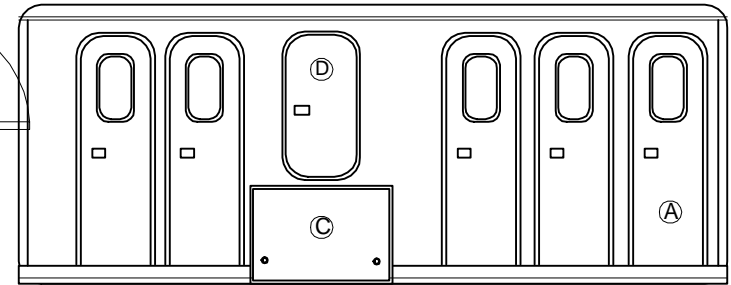
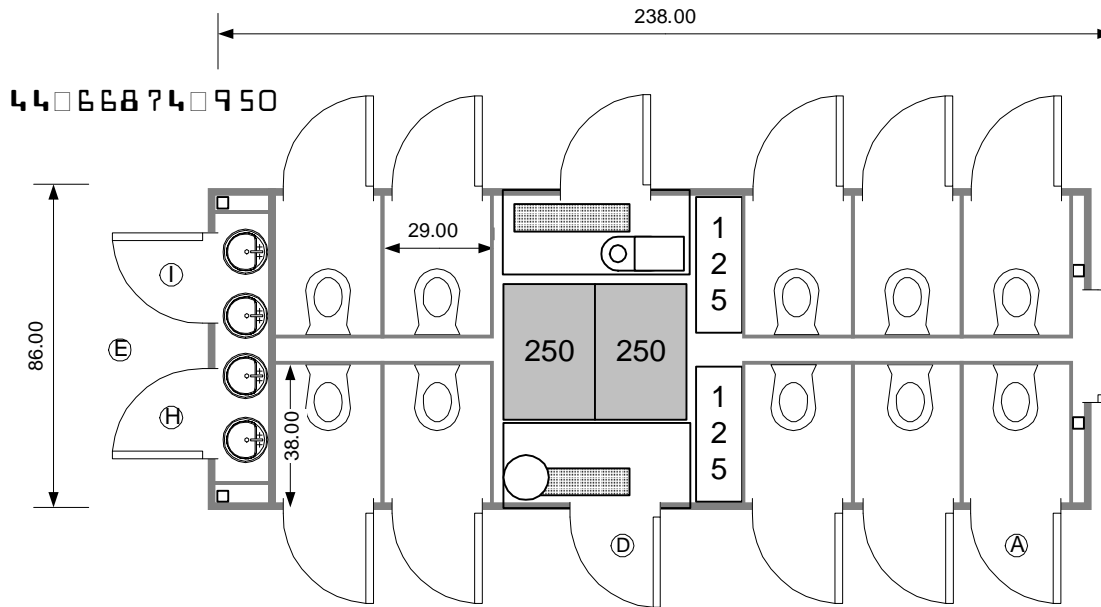
This document is the property of and contains unpublished proprietary information and trade secrets of A.M.S. Global Inc. By accepting possession of the document the recipient agrees to make no copies transcriptions or any use of this document or the information contained herein except as authorized by A.M.S. Global Inc. and further agrees to safe keep this document and return in to A.M.S. Global Inc. upon demand.

Approved by _____





Omega 20 10T 4RS 5'

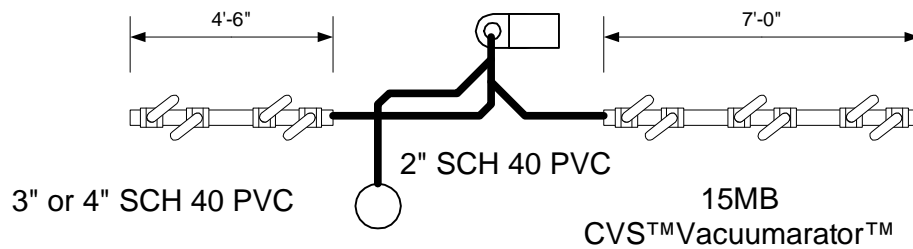


SIDE

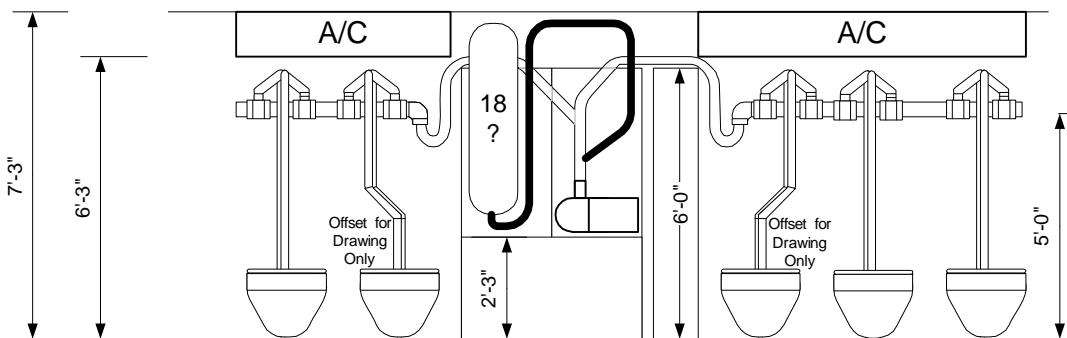
Openings

- (A) 78"x24" radius RH(5)
- (B) 48"x24" radius LH(1)
- (C) 32"x49" top hinge(2)
- (D) 48"x24" radius RH(1)
- (E) 60"x60" top hinge(1)
- (F) 78"x24" radius LH(5)
- (G) 78"x36" LH(1)
- (H) 23"x24" radius LH(1)
- (I) 23"x24" radius RH(1)

TOP



- 4000 flush capacity
- Lowers to ground
- Container Shipable
- Retractable tongue
- Electric Hydraulic Disk Brakes
- 10 Jet s™ Marine Toilets
- 500 gallon waste tank capacity
- 250 gallons fresh water storage
- Uses a less than quart per flush
- Central A/C ducted ventilation system
- Obscure windows in radius doors
- Retractable suspension
- 17.5 x 6.75 Radial Tires 6000 lb 16 ply
- All metal and composite construction
- Aluminum structure over steel chassis less 2500lbs
- LED 30,000 hour burn lighting and trailer lighting
- Liquefies waste paper and hygienic products
- Automatic Electric Leveling Jacks 16,000 lb max
- Self Pumping to Sewer Tap up to 100 yards w/10' head
- 240vac 50 amp power requirement



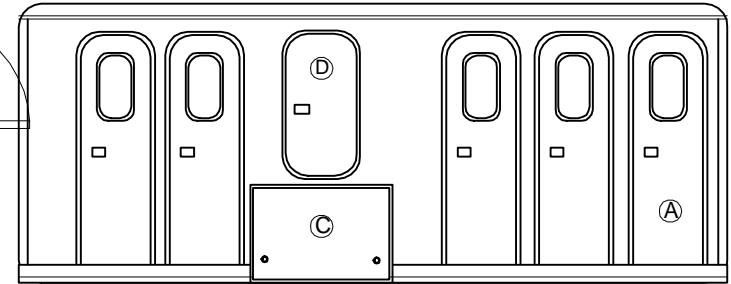
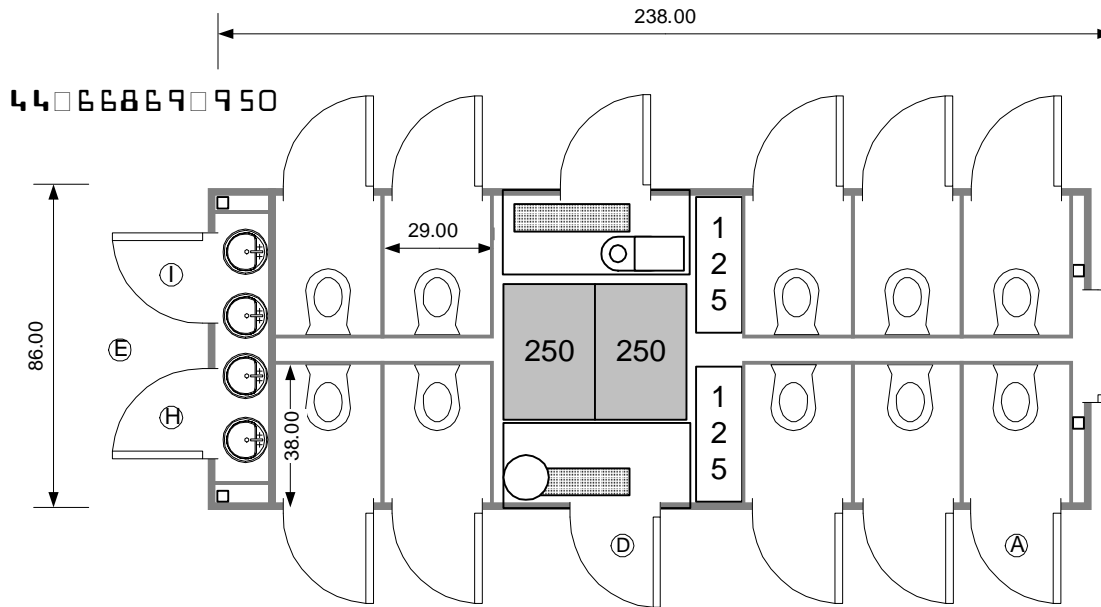
This document is the property of and contains unpublished proprietary information and trade secrets of A.M.S. Global Inc. By accepting possession of the document the recipient agrees to make no copies transcriptions or any use of this document or the information contained herein except as authorized by A.M.S. Global Inc. and further agrees to safe keep this document and return in to A.M.S. Global Inc. upon demand.

Approved by _____





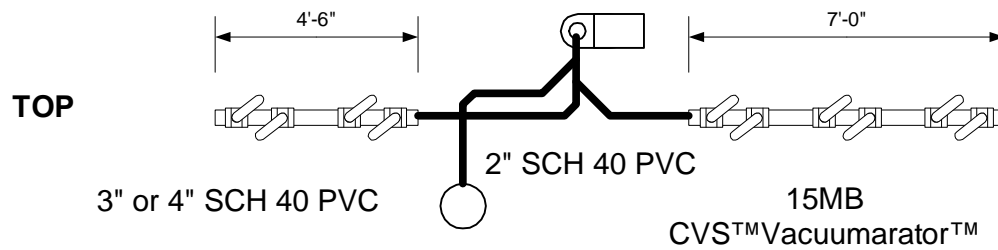
Omega 20 10T 4RS'



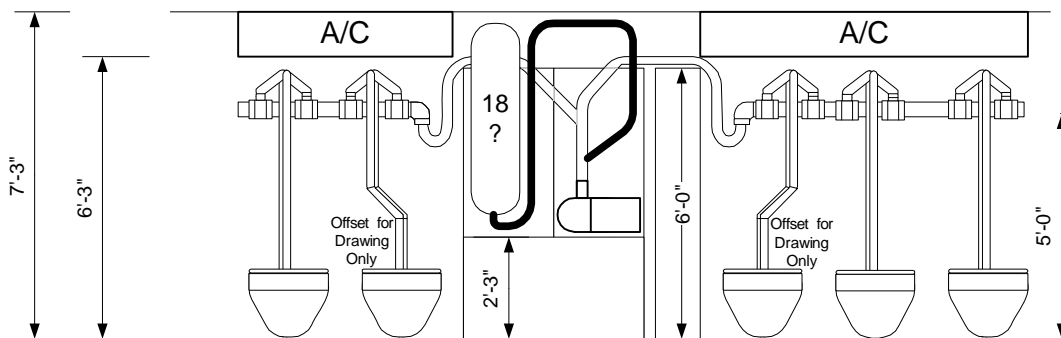
SIDE

Openings

- (A) 78"x24" radius RH(5)
- (B) 48"x24" radius LH(1)
- (C) 32"x49" top hinge(2)
- (D) 48"x24" radius RH(1)
- (E) 60"x60" top hinge(1)
- (F) 78"x24" radius LH(5)
- (G) 78"x36" LH(1)
- (H) 23"x24" radius LH(1)
- (I) 23"x24" radius RH(1)



- 4000 flush capacity
- Lowers to ground
- Container Shipable
- Retractable tongue
- Hydraulic Electric Disk Brakes
- 10 Jet s™ Marine Toilets
- 500 gallon waste tank capacity
- 250 gallons fresh water storage
- Uses less than a quart per flush
- Central ventilation system
- Obscure windows in radius doors
- 10000 pound retractable suspension
- 17.5 x 6.75 Radial Tires 6000 lb 16 ply
- All metal and composite construction
- LED 50,000 hour burn lighting and trailer lighting
- Liquefies all waste paper and hygienic products
- Automatic Electric Leveling Jacks 16,000 lb max
- Self Pumping to Sewer Tap up to 100 yards w/10' head
- 240vac @ 50 amp power requirement



This document is the property of and contains unpublished proprietary information and trade secrets of A.M.S. Global Inc. By accepting possession of the document the recipient agrees to make no copies transcriptions or any use of this document or the information contained herein except as authorized by A.M.S. Global Inc. and further agrees to safe keep this document and return in to A.M.S. Global Inc. upon demand.

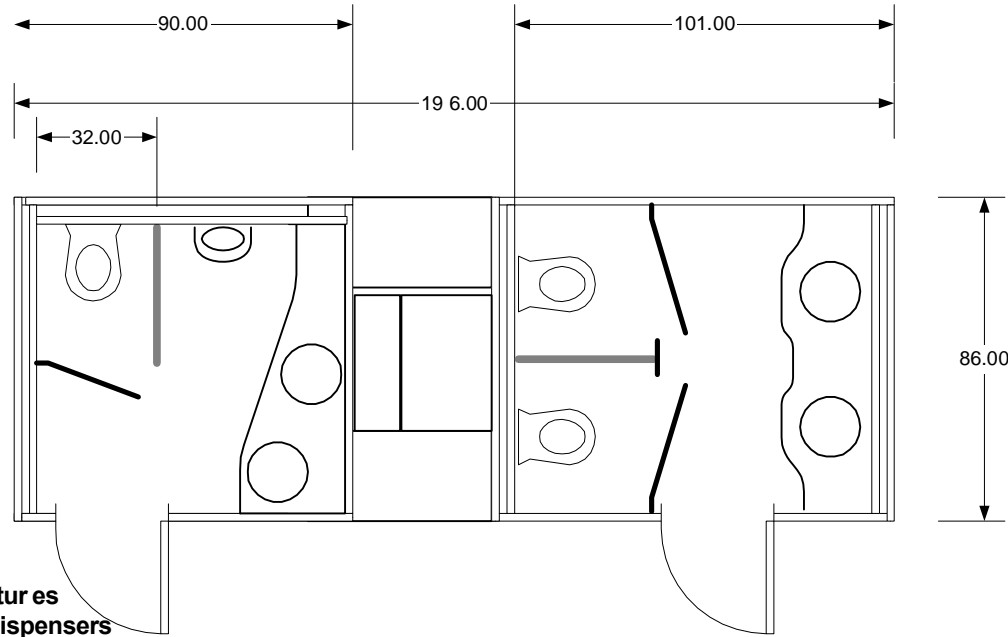
Approved by _____



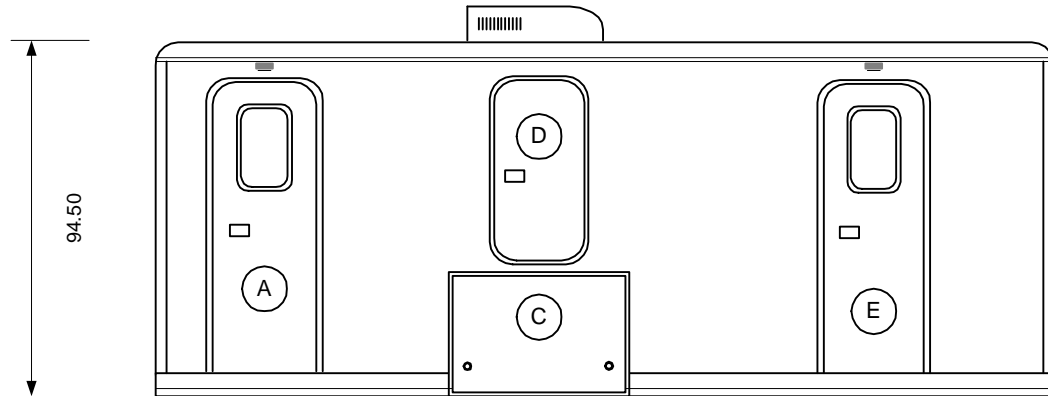
370727640987



Omega 20 4S3T 1U Platinum



- 2000 flush capacity
- Lowers to ground
- Container Shipable
- Retractable trailer tongue
- Porcelain wall hung toilet fixtures
- SS Towel, tissue and soap dispensers
- Gel type battery
- Granitised steel flooring
- Hydraulic Surge Disk Brakes
- 3 Jets™ Marine Toilets 10NT Vacuumator™
- 250 gallon waste tank capacity
- 250 gallons fresh water storage
- Uses around 1 pint per flush
- Heat & Air Conditioned 15,000btu / 5,500 btu
- Obscure windows in radius doors
- 10,000 pound retractable suspension
- 17.5 x 6.75 Radial Tires & wet bearings
- All metal and composite construction
- LED 50,000 hour burn lighting and trailer lighting
- Liquefies all waste paper and hygienic products
- Automatic Electric Leveling Jacks 16,000 lb. max.
- Self Pumping to Sewer Tap up to 100 yards w/10' head
- 240vac @ 50 ampamp power requirement

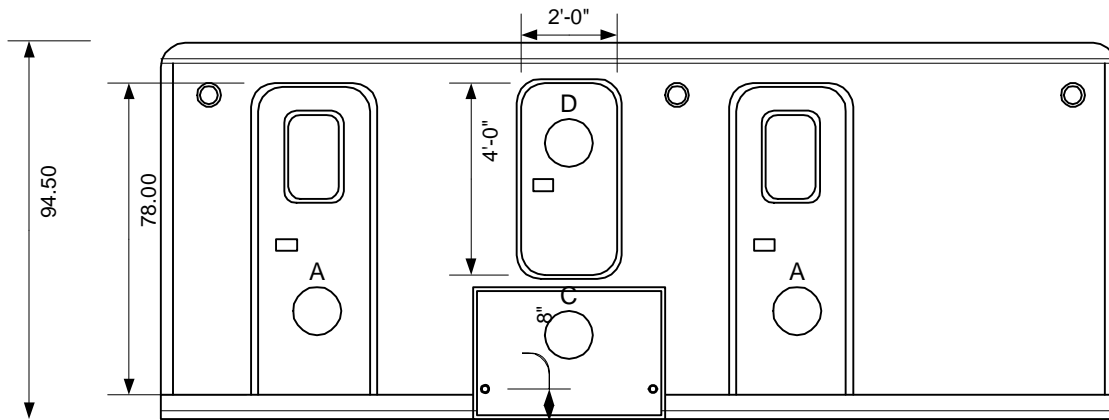


This document is the property of and contains unpublished proprietary information and trade secrets of A.M.S. Global Inc. By accepting possession of the document the recipient agrees to make no copies transcriptions or any use of this document or the information contained herein except as authorized by A.M.S. Global Inc. and further agrees to safe keep this document and return in to A.M.S. Global Inc. upon demand.

Approved by _____



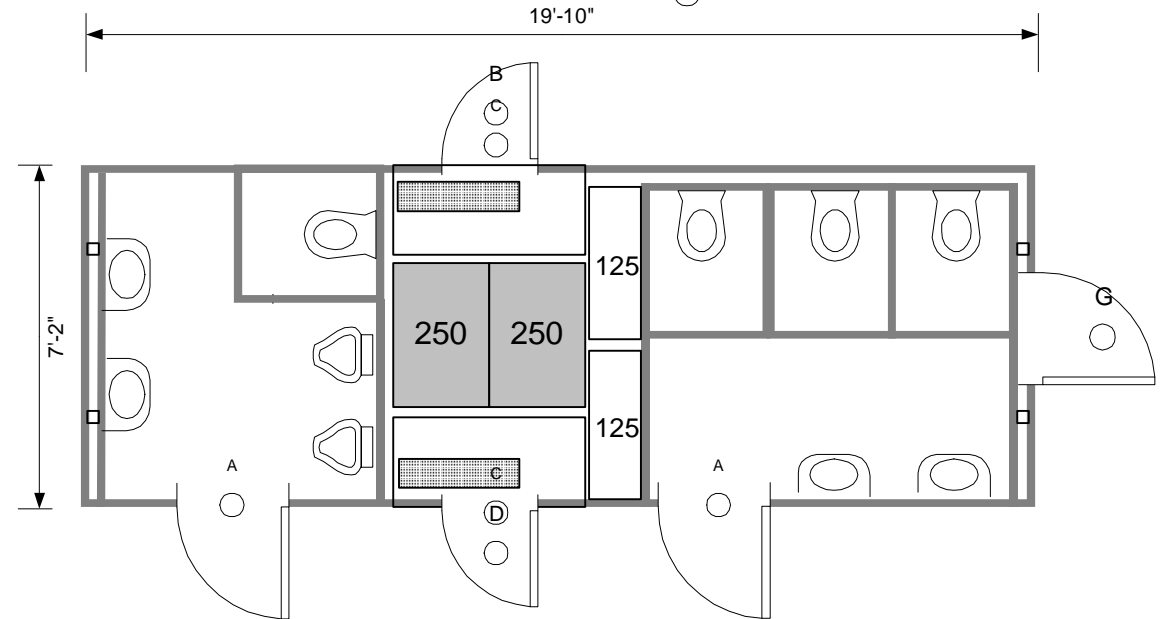
340885560444



Omega 20 4ST 2U

- A 78"x24" radius RH
- B 48"x24" radius LH
- C 32"x49" top hinge
- D 48"x24" radius RH
- E 78"x38" radius LH
- F 78"x24" radius LH
- G 77.5"x35.5" radius LH

- Lowers to ground**
- 4000 flush capacity**
- Container Shipable**
- Retractable tounge**
- Requires / 50 amp 240 ac**
- .040 Aluminum Exterior**
- Hydraulic Surge Disk Brakes**
- 500 gallon waste tank capacity**
- 250 gallons fresh water storage**
- Uses less than a quart per flush**
- 4 Jets™ Marine Toilets 10NT Vacuumator™**
- Obscure windows in radius doors**
- Heat & Air Conditioned 15,000BTU**
- 10,000 pound retractable suspension**
- 17.5 x 6.75 16 ply 6000# Radial Tires**
- All metal and composite construction**
- LED 50,000 hour burn lighting and trailer lighting**
- Liquefies all waste paper and hygienic products**
- Automatic Electric Leveling Jacks 16,000 lb. max**
- Self Pumping to Sewer Tap up to 100 feet w/10' head 1" line**



This document is the property of and contains unpublished proprietary information and trade secrets of A.M.S. Global Inc. By accepting possession of the document the recipient agrees to make no copies transcriptions or any use of this document or the information contained herein except as authorized by A.M.S. Global Inc. and further agrees to safe keep this document and return in to A.M.S. Global Inc. upon demand.

Approved by _____

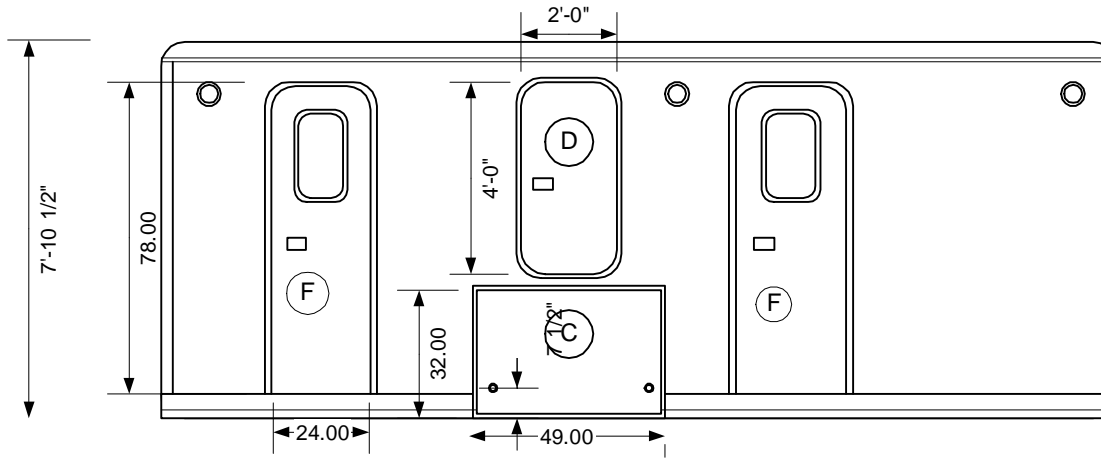


39085620875

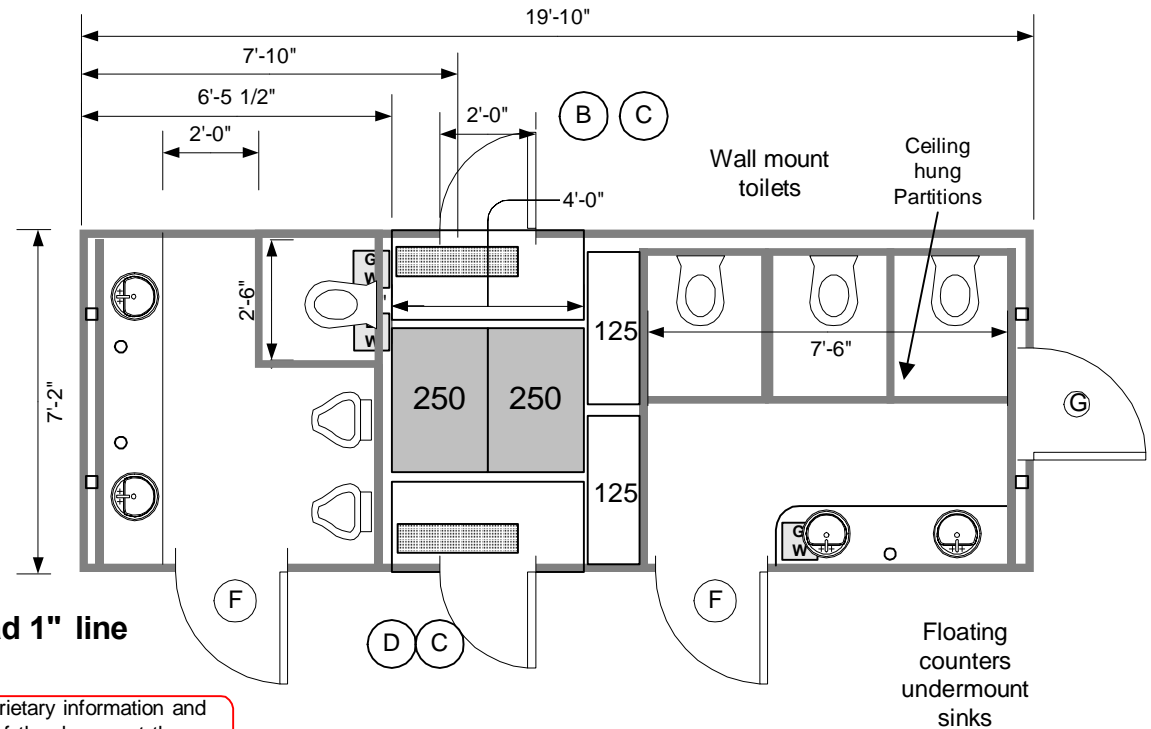


Omega 20 4ST 2U Platinum

- Ⓐ 78"x24" radius RH
- Ⓑ 48"x24" radius LH
- Ⓒ 32"x49" top hinge
- Ⓓ 48"x24" radius RH
- Ⓔ 78"x38" radius LH
- Ⓕ 78"x24" radius RH
- Ⓖ 77.5"x35.5" radius LH



Lowers to ground
4000 flush capacity
Container Shipable
Retractable to ungue
Requires 30amp & \$AC
.040 Aluminum Exterior
Hydraulic Surge Disk Brakes
500 gallon waste tank capacity
250 gallons fresh water storage
Uses less than a quart per flush
4 Jets! Marine Toilets with 1500psi Ultra High Pressure
Obscure windows in radius doors
Heat & Air Conditioned 15,000BTU
2500 pound retractable suspension
17.5 x 6.75 16 ply 6000# Radial Tires
All metal and composite construction
LED 10,000 hour burn lighting and trailer lighting
Liquefies all waste paper and hygienic products
Automatic Electric Leveling Jacks 16,000 lb. max
Self Pumping to Sewer Tap up to 100 feet w/10' head 1" line



This document is the property of and contains unpublished proprietary information and trade secrets of A.M.S. Global Inc. By accepting possession of the document the recipient agrees to make no copies transcriptions or any use of this document or the information contained herein except as authorized by A.M.S. Global Inc. and further agrees to safe keep this document and return in to A.M.S. Global Inc. upon demand.



Approved by _____

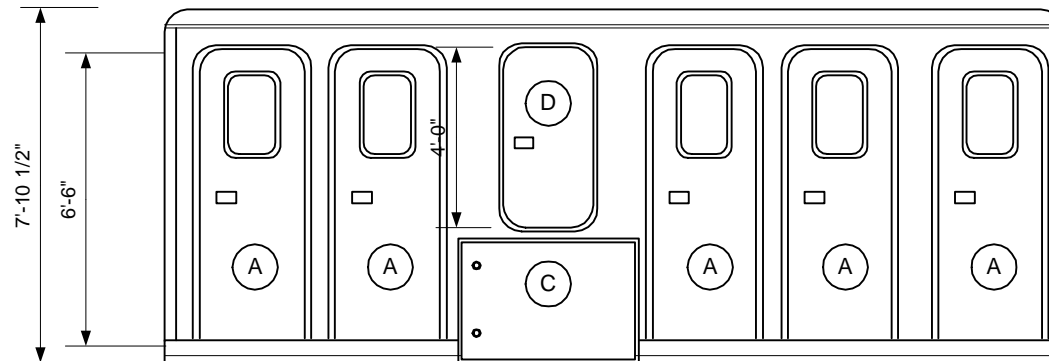


36 30 16 5 7 6 6

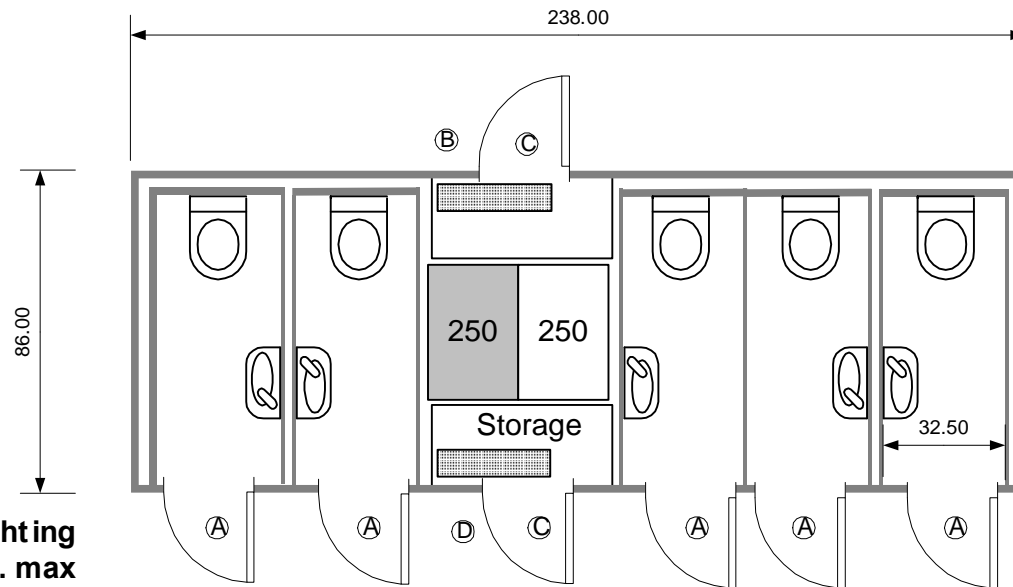


Omega 20 5ST

- (A) 78"x24" radius RH
- (B) 48"x24" radius LH
- (C) 32"x49" top hinge
- (D) 48"x24" radius RH
- (E) 78"x38" radius RH
- (F) 78"x24" radius RH
- (G) 77.5"x35.5" radius LH



- Lowert to ground**
- Container S hipable**
- Requires 30amp 110AC**
- .040 Aluminum Exterior**
- Hydraulic Electric Disk Brakes**
- 250 gallon waste tank capacity**
- 250 gallons fresh water storage**
- Obscure windows in radius doors**
- Heat & Air Conditioned 15,000BTU**
- 9,900 pound retractable suspension**
- 17.5 x 6.75 16 ply 6000# Radial Tires**
- All metal and composite construction**
- LED 50,000 hour burn lighting and trailer lighting**
- Automatic Electric Leveling Jacks 16,000 lb. max**
- Self Pumping to Sewer Tap up to 100 feet w/10' head 1" line**
- Jets™ Ultima Vacuumator™ and 5 Jets™ toilets**



This document is the property of and contains unpublished proprietary information and trade secrets of A.M.S. Global Inc. By accepting possession of the document the recipient agrees to make no copies transcriptions or any use of this document or the information contained herein except as authorized by A.M.S. Global Inc. and further agrees to safe keep this document and return in to A.M.S. Global Inc. upon demand.

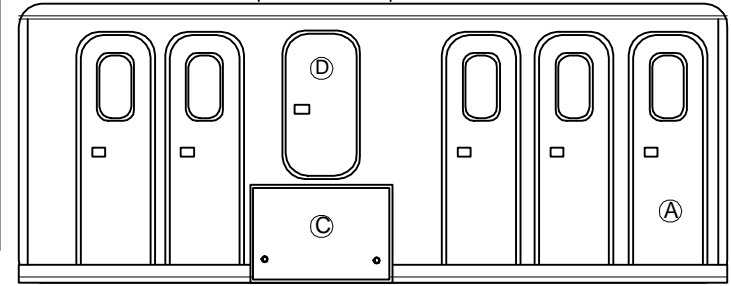
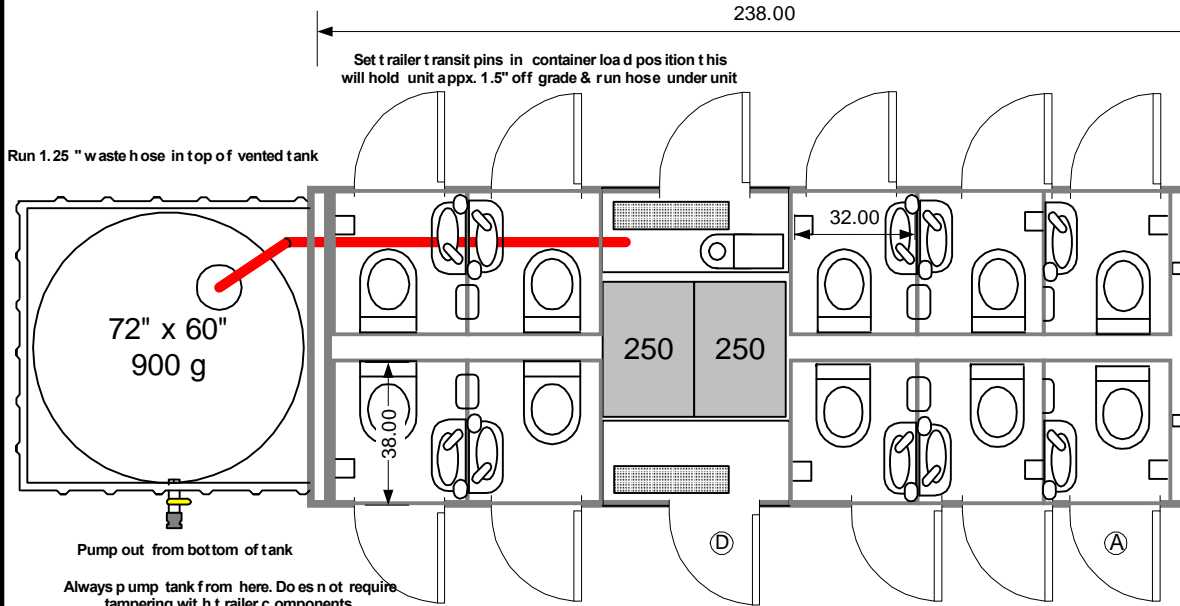
Approved by _____



44 668 74 950



Omega 20 10ST XT

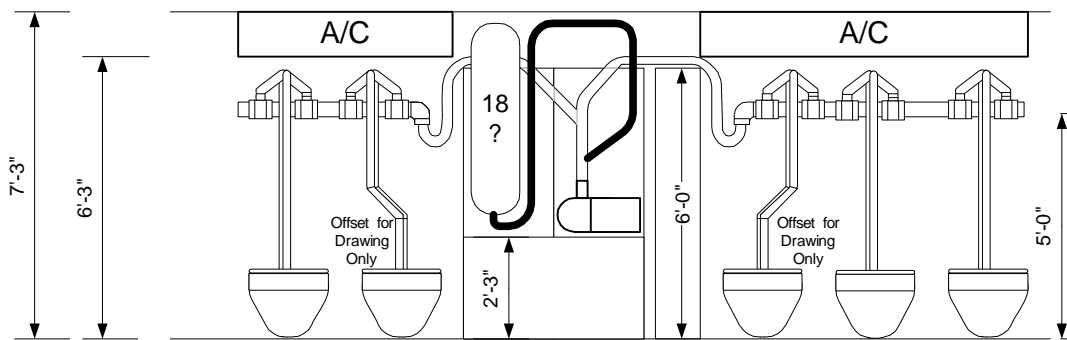
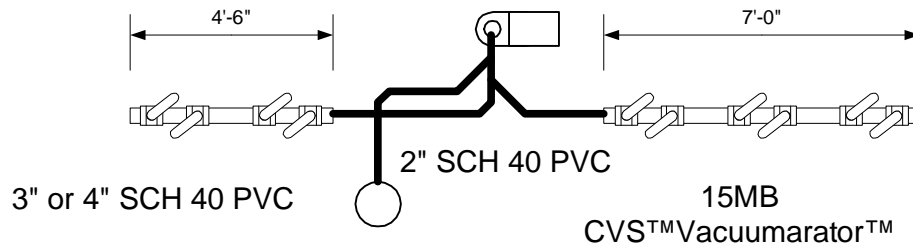


SIDE

Openings

- (A) 78"x24" radius RH(5)
- (B) 48"x24" radius LH(1)
- (C) 32"x49" top hinge(2)
- (D) 48"x24" radius RH(1)
- (E) 60"x60" top hinge(1)
- (F) 78"x24" radius LH(5)
- (G) 78"x36" LH(1)
- (H) 23"x24" radius LH(1)
- (I) 23"x24" radius RH(1)

TOP



- Lowers to ground
- Container Shipable
- Retractable tongue
- Hydraulic Surge Disk Brakes
- 10 Jet s™ Marine Toilets
- 500 gallon waste tank capacity
- All Stainless Steel Dispensers
- Central ventilation system
- Obscure windows in radius doors
- 10,000 pound retractable suspension
- 17.5 x 6.75 Radial Tires 6000 lb 16 ply
- All metal and composite construction
- LED 50,000 hour burn lighting and trailer lighting
- Liquefies all waste paper and hygienic products
- Automatic Electric Leveling Jacks 16,000 lb max
- Self Pumping to Sewer Tap up to 100 yards
- 240v 50 amp power requirement

This document is the property of and contains unpublished proprietary information and trade secrets of A.M.S. Global Inc. By accepting possession of the document the recipient agrees to make no copies transcriptions or any use of this document or the information contained herein except as authorized by A.M.S. Global Inc. and further agrees to safe keep this document and return in to A.M.S. Global Inc. upon demand.

Approved by _____

