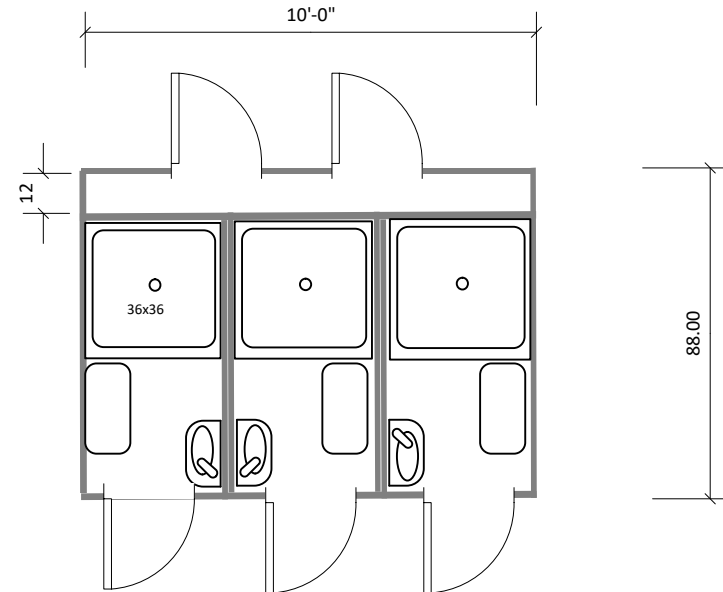
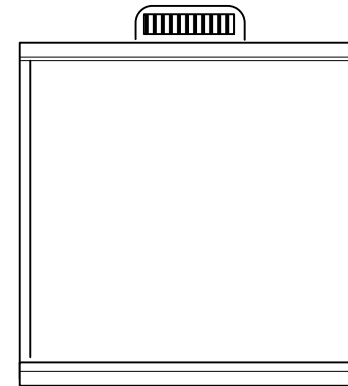
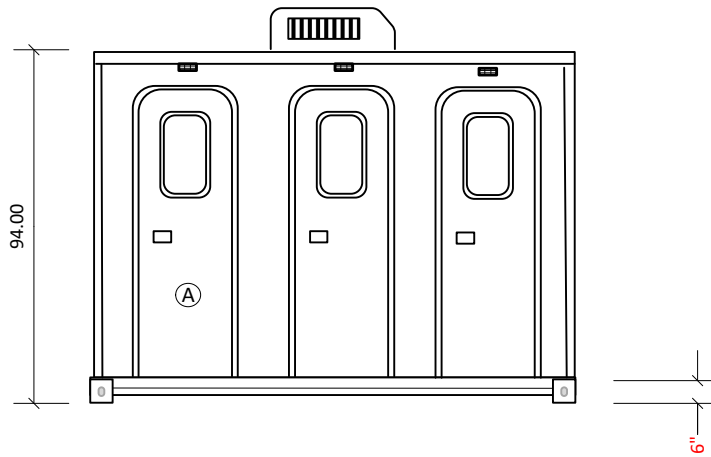




# CI 10 3SS D



- Porcelain wall hung fixtures
- 15,000 BTU ac unit with 5500 watts heat
- Stainless Steel napkin dispenser. Soap disp. & mirror
- Rubber coin over epoxy steel flooring
- Obscure skylights in radius doors
- Vandal resistant pebble finished wall panels
- Double foil radiant barrier insulation
- Led 50,000 hr LED lighting
- Automatic body sensing lighting
- Occupancy indicator deadbolts
- All metal and composite construction
- Forklift pockets on back
- Stainless steel soap holders
- 3" SCH 40 PVC stub out for waste connection
- 1" SCH 40 PVC stub out water connection

1500 watt Broan room heaters optional

Approved by \_\_\_\_\_

This document is the property of and contains unpublished proprietary information and trade secrets of A.M.S. Global Inc. By accepting possession of the document the recipient agrees to make no copies transcriptions or any use of this document or the information contained herein except as authorized by A.M.S. Global Inc. and further agrees to safe keep this document and return in to A.M.S. Global Inc. upon demand.

