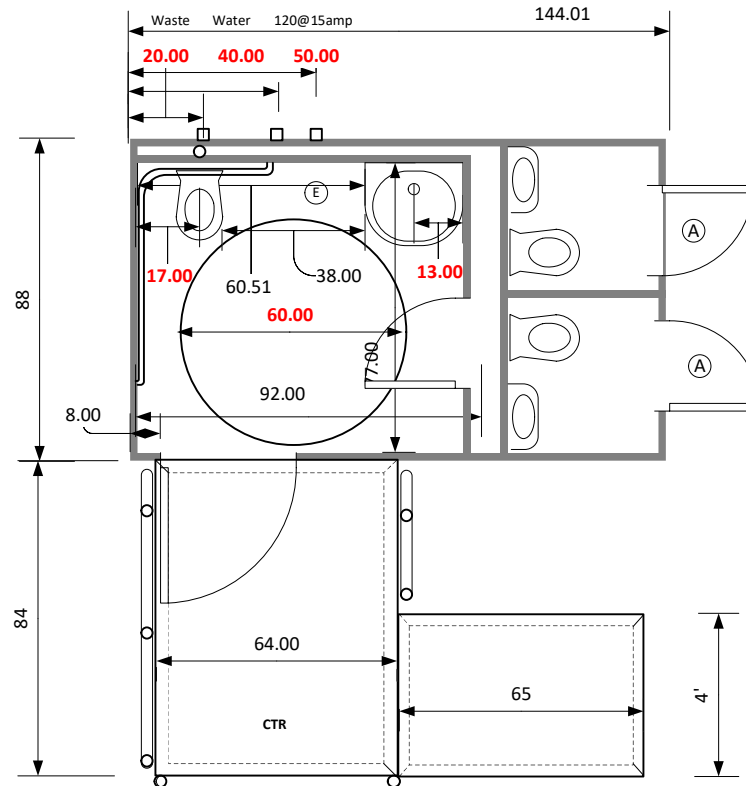
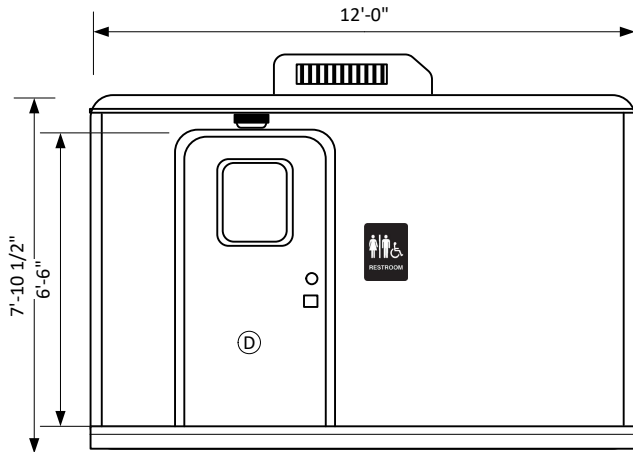




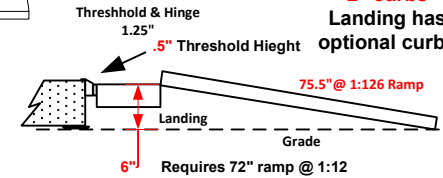
- Ⓐ 78"x24" radius LH
- Ⓓ 78"x36" radius LH
- Ⓔ 48"x24" radius LH

CI ADA 12 3ST D



For 1:24 slope specify 2 ramps

Ramps have 2" curbs
Landing has optional curbs



Handrails

Top Height 36" above Platform

Top of Cross Bars 14" below bottom of Top Rail. Railing 1.5" OD Diameter and slides into 4" piece of 1.5" ID pipe welded to landing.

- Direct Connect 3" sewer
- Container Shippable
- 1 ADA compliant restroom 2 Standard Commercial toilet & Large ADA wall hung sink
- Obscure skylight window in radius door
- Door closer & occupancy indicators
- 13,000 BTU A/C 5500 Heat
- All metal and composite construction
- LED 100,000 hour burn lighting
- 120 VAC power requirement
- SS mirror, soap, towel & tissue dispensers
- Aluminum ADA ramps w/Stainless steel railings

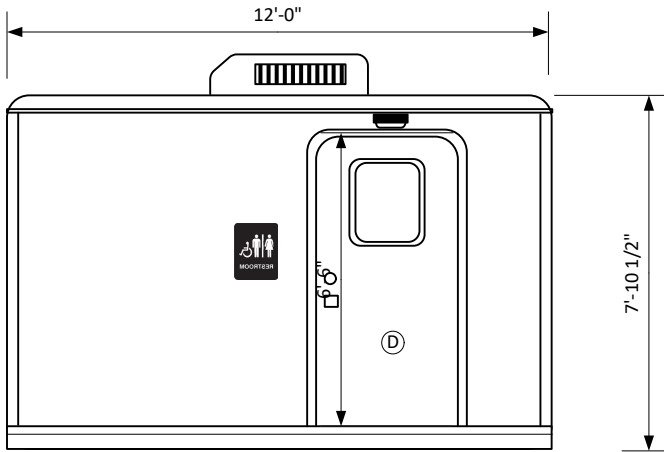
These restrooms are designed to be compliant with all current guidelines as we are aware of. Many guidelines have gray areas and points open to interpretation. Different entities may have differed interpretations or local differences. We suggest getting approvals of final plans from the authorities in the local the unit will be placed

This document is the property of and contains unpublished proprietary information and trade secrets of A.M.S. Global Inc. By accepting possession of the document the recipient agrees to make no copies transcriptions or any use of this document or the information contained herein except as authorized by A.M.S. Global Inc. and further agrees to safe keep this document and return in to A.M.S. Global Inc. upon demand.

Approved by _____

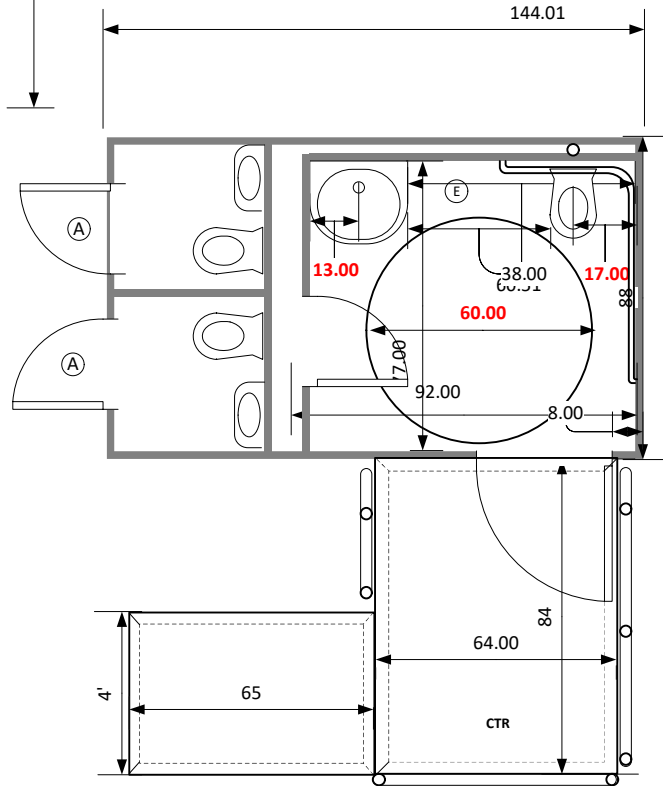


7,83821,750



CI ADA 12 3ST D Reverse

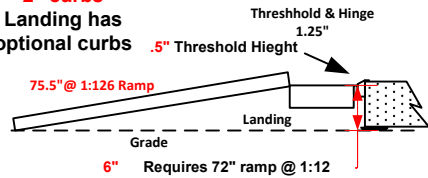
- 78"x24" radius LH (A)
- 78"x36" radius LH (D)
- 48"x24" radius LH (E)



- Direct Connect 3" sewer
- Container Shippable
- 1 ADA compliant restroom 2 Standard
- Commercial toilet & Large ADA wall hung sink
- Obscure skylight window in radius door
- Door closer & occupancy indicators
- 13,000 BTU A/C 5500 Heat
- All metal and composite construction
- LED 100,000 hour burn lighting
- 120 VAC power requirement
- SS mirror, soap, towel & tissue dispensers
- Aluminum ADA ramps w/Stainless steel railings

For 1:24 slope
specify 2
ramps

Ramps have
2" curbs
Landing has
optional curbs



Handrails

Top Height 36" above Platform

Top of Cross Bars 14" below bottom of Top Rail. Railing
1.5" OD Diameter and slides into 4" piece of 1.5" ID
pipe welded to landing.

These restrooms are designed to be compliant with all current guidelines as we are aware of. Many guidelines have gray areas and points open to interpretation. Different entities may have differed interpretations or local differences. We suggest getting approvals of final plans from the authorities in the local the unit will be placed

This document is the property of and contains unpublished proprietary information and trade secrets of A.M.S. Global Inc. By accepting possession of the document the recipient agrees to make no copies transcriptions or any use of this document or the information contained herein except as authorized by A.M.S. Global Inc. and further agrees to safe keep this document and return in to A.M.S. Global Inc. upon demand.



Approved by _____

