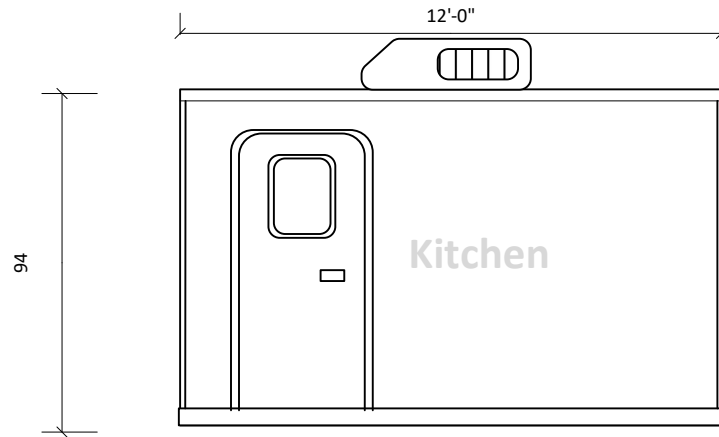
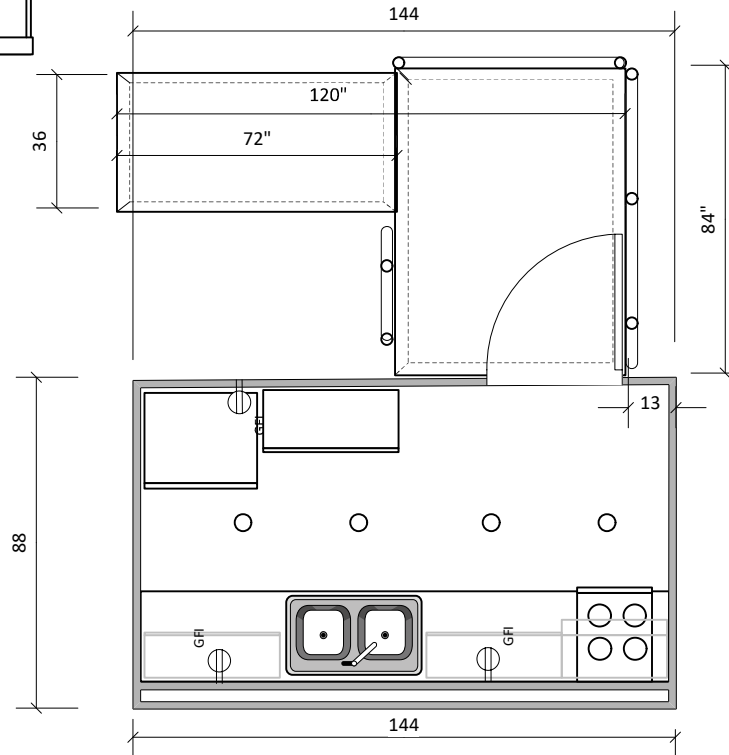


20,98442,725



### CI 12 Kitchen

- Pantry Unit
- 13000 BTU AC with 5500 watt heat strip
- 6' Lower and upper cabinets
- 36 18 72 tall steel cabinet
- Double stainless steel sink
- 30" Refrigerator
- LP range & vent hood
- LED 30 year lighting
- 4 120 vac GFI duplex outlets
- Microwave oven
- Hardwired
- 125"x 72" Ramp



Approved by \_\_\_\_\_

This document is the property of and contains unpublished proprietary information and trade secrets of A.M.S. Global Inc. By accepting possession of the document the recipient agrees to make no copies transcriptions or any use of this document or the information contained herein except as authorized by A.M.S. Global Inc. and further agrees to safe keep this document and return in to A.M.S. Global Inc. upon demand.

These restrooms are designed to be compliant with all current guidelines as we are aware of . Many guidelines have gray areas and points open to interpretation. Different entities may have differed interpretations or local differences. We suggest getting approvals of final plans from the authorities in the local the unit will be placed

