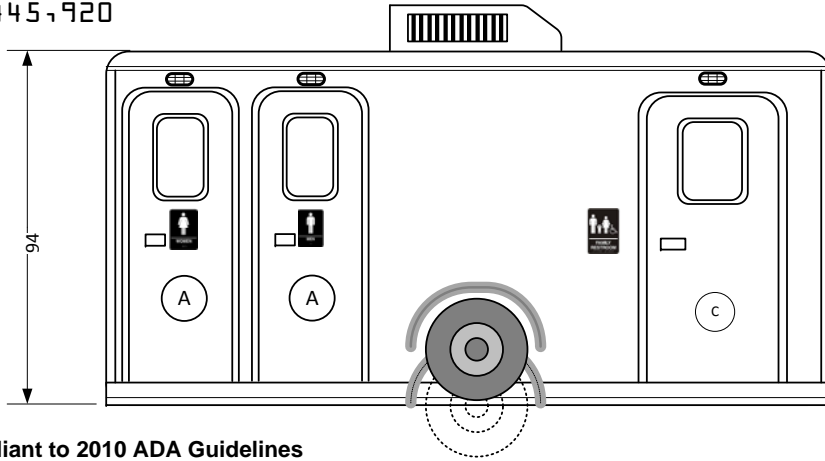


20-98445-920

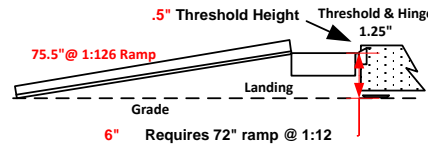
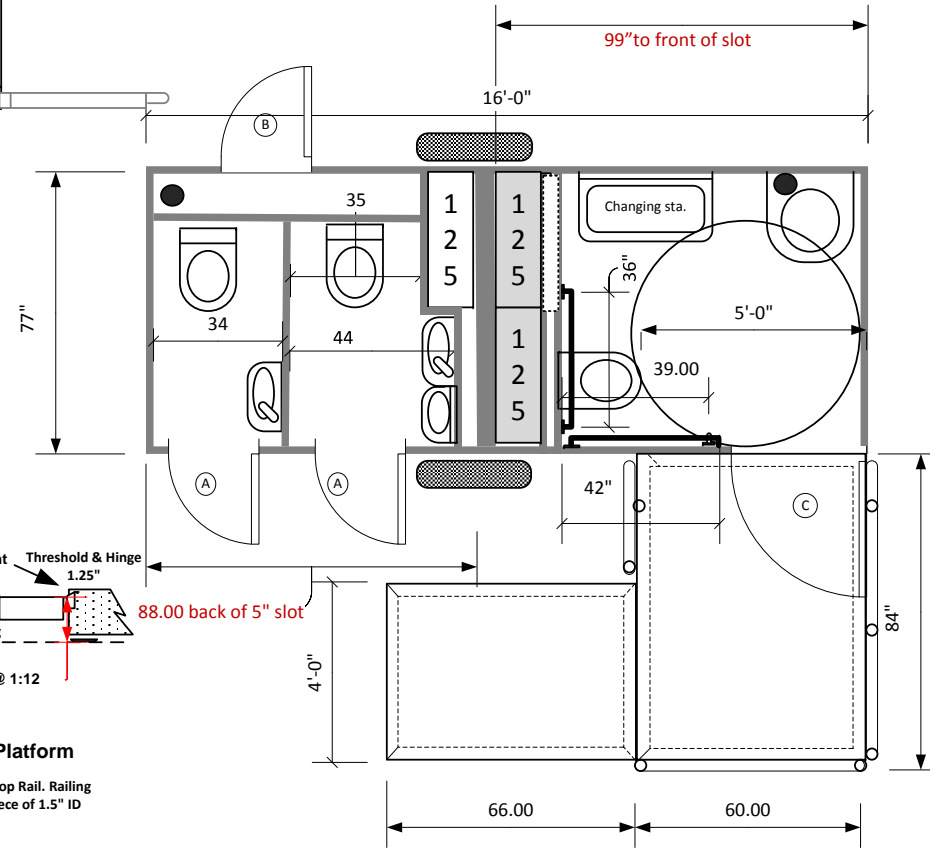


- Ⓐ 78"x24" radius RH
- Ⓑ 78"x32" radius LH
- Ⓒ 80"x 36" radius RH



Omega Lite 16 ADA 3ST1U

- ADA compliant to 2010 ADA Guidelines
- Lowers to ground & Container Shipable
- Removeable trailer tongue
- Porcelain wall hung fixtures
- 375 gl tank storage Custom to your specifications
- Rotationally molded vertical tanks
- Stainless Steel Towel, tissue and soap dispensers
- Rubber coin over steel flooring Electric Brakes
- 3 Jets Marine Toilets & ULTIMA VOD Vacuumator
- Uses around one pint per flush with auto flush urinal
- Air Conditioned 16,000btu / 5,500 btu heat
- Ducted ventilation Obscure skylights in radius doors
- Vandal resistant pebble finished wall panels
- Double foil radiant barrier insulation
- Retractable TorFlex suspension
- 16 x 6.75 14 ply Radial Tires & Easy-Lube bearings
- All metal and composite construction
- LED 50,000 hour burn automatic lighting and trailer lighting
- Dawn to dusk LED porch lighting
- Liquefies all waste paper and hygienic products
- Self Pumping to Sewer Tap up to 100 yards w/10' head
- One 50 amp/240 ac power inlet
- Aluminum ADA ramp w/Stainless steel railing
- 4" curbs are optional on ADA landing
- Changing station standard
- 2000 flushes at Max
- Option: Winterpackage with 3 Aux. heaters



Handrails

Top Height 36" above Platform

Top of Cross Bars 14" below bottom of Top Rail. Railing 1.5" OD Diameter and slides into 4" piece of 1.5" ID pipe welded to landing.

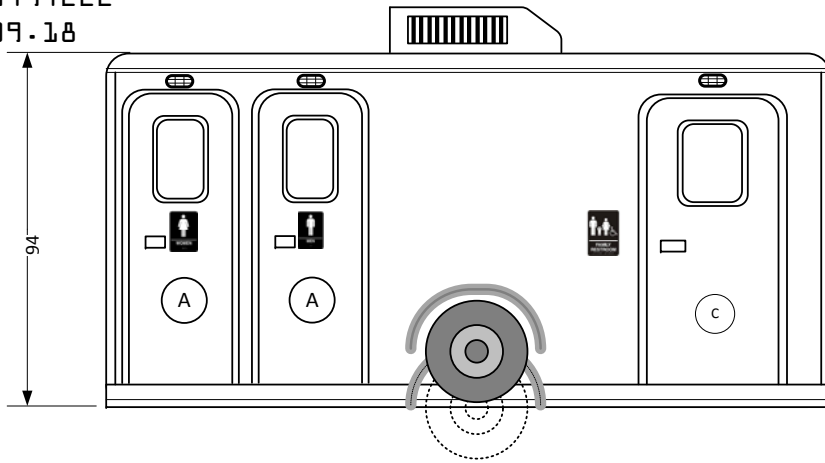
These restrooms are designed to be compliant with all current guidelines as we are aware of. Many guidelines have gray areas and points open to interpretation. Different entities may have differed interpretations or local differences. We suggest getting approvals of final plans from the authorities in the local the unit will be placed

This document is the property of and contains unpublished proprietary information and trade secrets of A.M.S. Global Inc. By accepting possession of the document the recipient agrees to make no copies transcriptions or any use of this document or the information contained herein except as authorized by A.M.S. Global Inc. and further agrees to safe keep this document and return in to A.M.S. Global Inc. upon demand.

Approved by _____



23,411,49,222
10-09-18

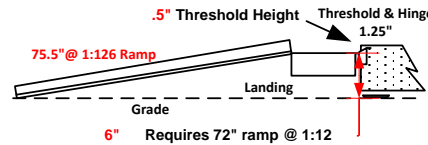
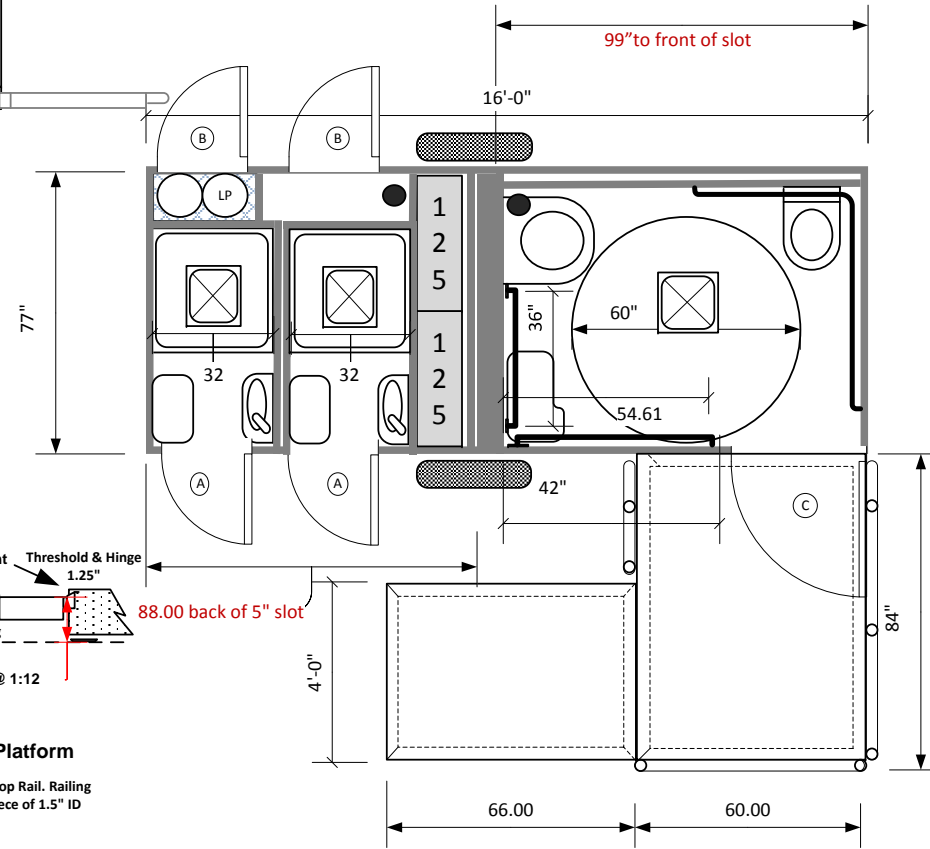


- Ⓐ 78"x24" radius RH
- Ⓑ 48"x24" radius LH
- Ⓒ 80"x 36" radius RH



Omega Lite 16 ADA 3SS1T

- ADA compliant to 2010 ADA Guidelines
- Lowers to ground
- Removeable trailer tongue
- Porcelain wall hung fixtures
- 250 gl tank storage Custom to your specifications
- Rotationally molded vertical tanks
- Stainless Steel Towel, tissue and soap dispensers
- Rubber coin over steel flooring Electric Brakes
- Obscure skylights in radius doors
- Vandal resistant pebble finished wall panels
- Double foil radiant barrier insulation
- Retractable TorFlex suspension
- 16 x 6.75 14 ply Radial Tires & Easy-Lube bearings
- All metal and composite construction
- LED 50,000 hour burn automatic lighting and trailer lighting
- Dawn to dusk LED porch lighting
- One 20 amp 120 ac power inlet
- Aluminum ADA ramp w/Stainless steel railing
- 3 Turbo Vent Fans Two 40# LP Tanks
- LP on demand water heater



Handrails

Top Height 36" above Platform

Top of Cross Bars 14" below bottom of Top Rail. Railing 1.5" OD Diameter and slides into 4" piece of 1.5" ID pipe welded to landing.

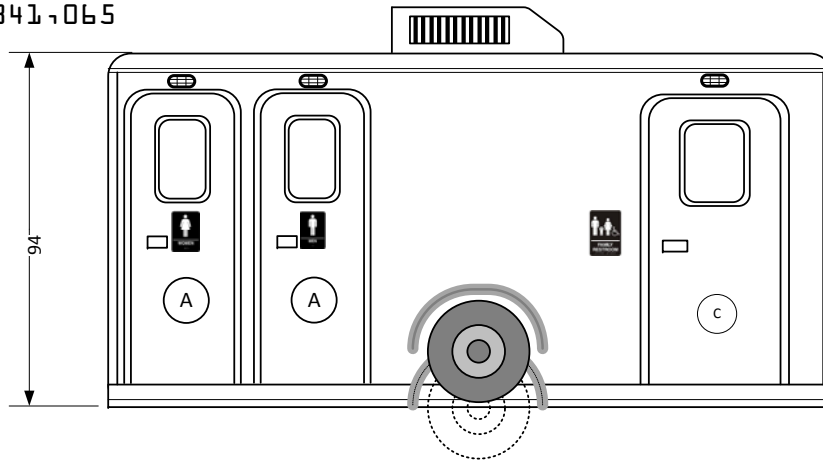
These restrooms are designed to be compliant with all current guidelines as we are aware of. Many guidelines have gray areas and points open to interpretation. Different entities may have differed interpretations or local differences. We suggest getting approvals of final plans from the authorities in the local the unit will be placed

This document is the property of and contains unpublished proprietary information and trade secrets of A.M.S. Global Inc. By accepting possession of the document the recipient agrees to make no copies transcriptions or any use of this document or the information contained herein except as authorized by A.M.S. Global Inc. and further agrees to safe keep this document and return in to A.M.S. Global Inc. upon demand.

Approved by _____



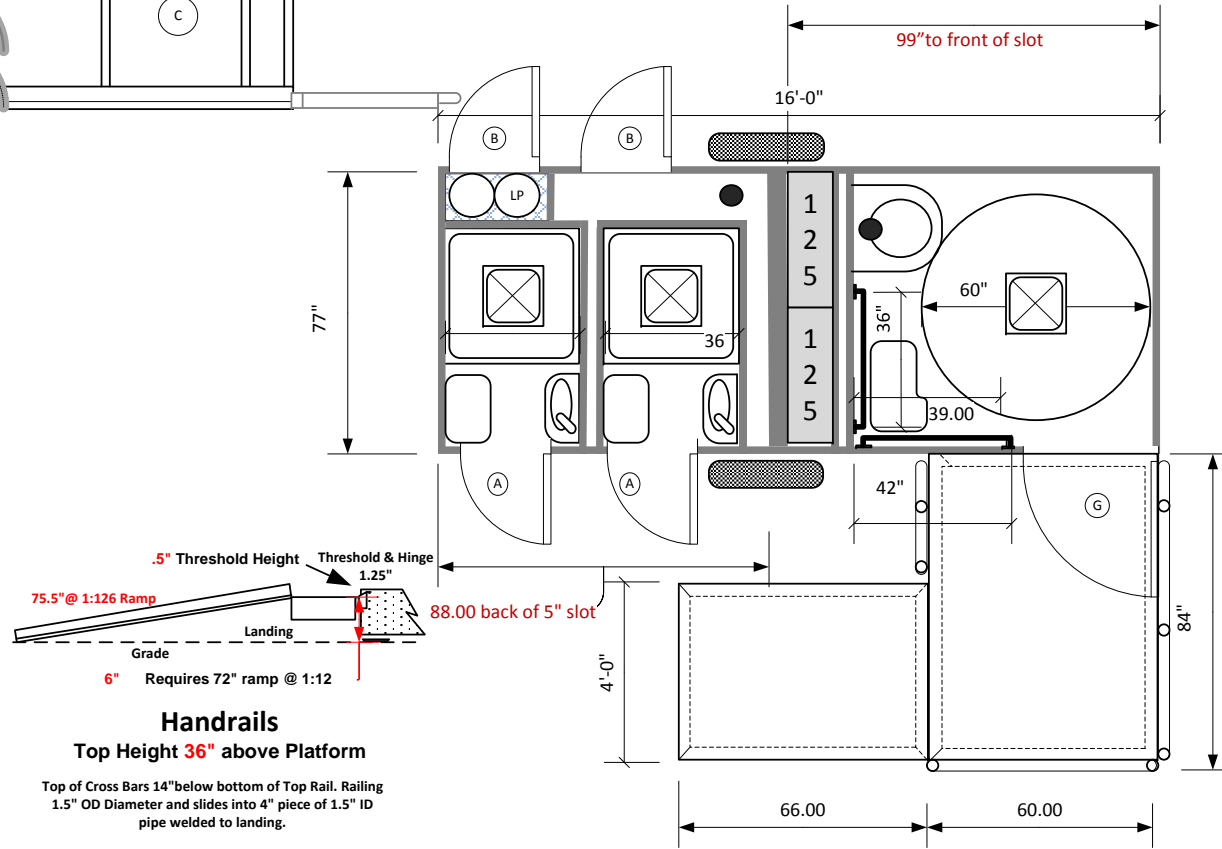
18-95341-065



- (A) 78"x24" radius RH
- (B) 48"x24" radius LH
- (C) 80"x 36" radius RH

Omega Lite 16 ADA 3SS

- ADA compliant to 2010 ADA Guidelines
- Lowers to ground
- Removeable trailer tongue
- Porcelain wall hung fixtures
- 250 gl tank storage Custom to your specifications
- Rotationally molded vertical tanks
- Stainless Steel Towel, tissue and soap dispensers
- Rubber coin over steel flooring Electric Brakes
- Obscure skylights in radius doors
- Vandal resistant pebble finished wall panels
- Double foil radiant barrier insulation
- Retractable TorFlex suspension
- 16 x 6.75 14 ply Radial Tires & Easy-Lube bearings
- All metal and composite construction
- LED 50,000 hour burn automatic lighting and trailer lighting
- Dawn to dusk LED porch lighting
- One 20 amp 120 ac power inlet
- Aluminum ADA ramp w/Stainless steel railing
- 3 Turbo Vent Fans Two 40# LP Tanks
- LP on demand water heater



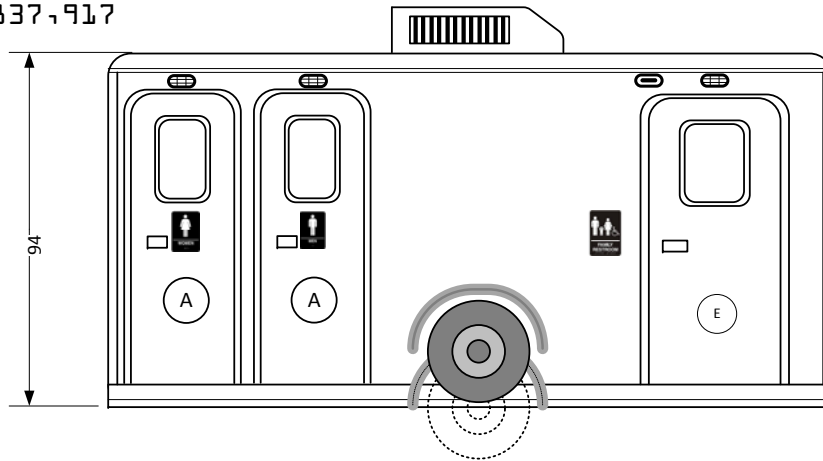
These restrooms are designed to be compliant with all current guidelines as we are aware of . Many guidelines have gray areas and points open to interpretation. Different entities may have differed interpretations or local differences. We suggest getting approvals of final plans from the authorities in the local the unit will be placed

This document is the property of and contains unpublished proprietary information and trade secrets of A.M.S. Global Inc. By accepting possession of the document the recipient agrees to make no copies transcriptions or any use of this document or the information contained herein except as authorized by A.M.S. Global Inc. and further agrees to safe keep this document and return in to A.M.S. Global Inc. upon demand.

Approved by _____



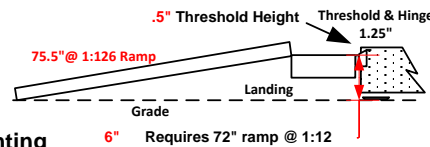
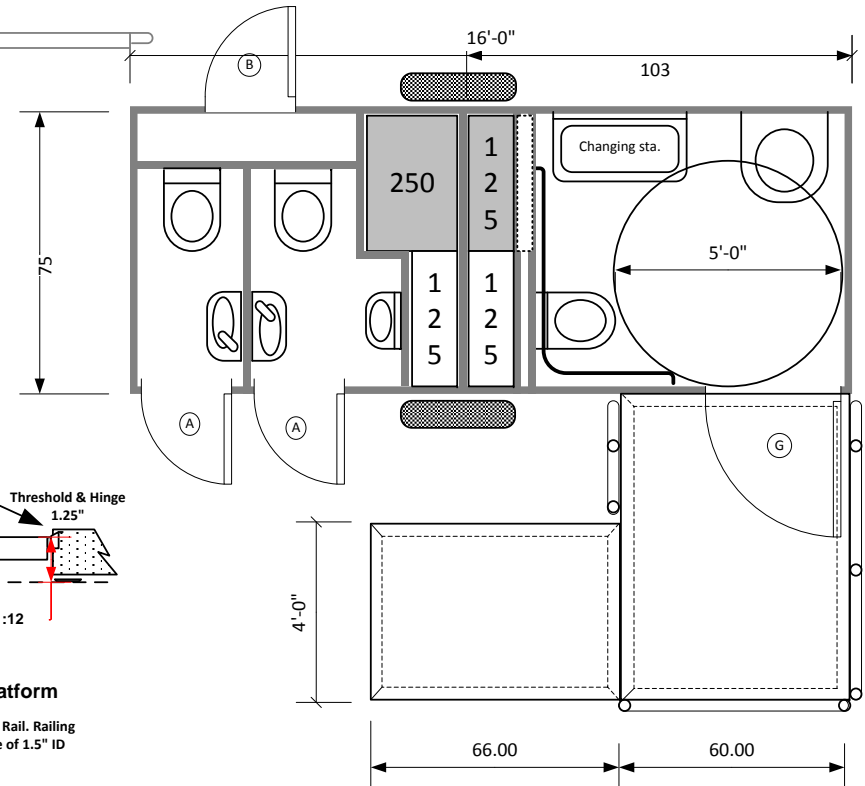
18-85837-917



- Ⓐ 78"x24" radius RH
- Ⓑ 48"x24" radius LH
- Ⓒ 32"x49" top hinge
- Ⓓ 48"x24" radius RH
- Ⓔ 78"x36" radius RH
- Ⓕ 78"x24" radius LH
- Ⓖ 80"x 36" radius RH

Omega Lite 16 ADA 3ST1U

- ADA compliant to 2010 ADA Guidelines
- Lowers to ground & Container Shipable
- Removeable trailer tongue
- Porcelain wall hung fixtures
- 625 gl tank storage Custom to your specifications
- Rotationally molded vertical tanks
- Stainless Steel Towel, tissue and soap dispensers
- Rubber coin over steel flooring Electric Brakes
- 3 Jets Marine Toilets & OPTIMA VOD Vacuumator
- Uses around one pint per flush with auto flush urinal
- Heat Pump or Air Conditioned 15,000btu / 5,500 btu heat
- Ducted ventilation 4500 watt aux. heater
- Obscure skylights in radius doors
- Vandal resistant pebble finished wall panels
- Double foil radiant barrier insulation
- Retractable TorFlex suspension
- 16 x 6.75 14 ply Radial Tires & Easy-Lube bearings
- All metal and composite construction
- LED 50,000 hour burn automatic lighting and trailer lighting
- Dawn to dusk LED porch lighting
- Liquefies all waste paper and hygienic products
- Self Pumping to Sewer Tap up to 100 yards w/10' head
- One 50 amp/240 ac power inlet
- Aluminum ADA ramp w/Stainless steel railing
- 4" curbs are optional on ADA landing
- Changing station standard
- 4000 – 3500 flushes at Max



Handrails

Top Height 36" above Platform

Top of Cross Bars 14" below bottom of Top Rail. Railing 1.5" OD Diameter and slides into 4" piece of 1.5" ID pipe welded to landing.

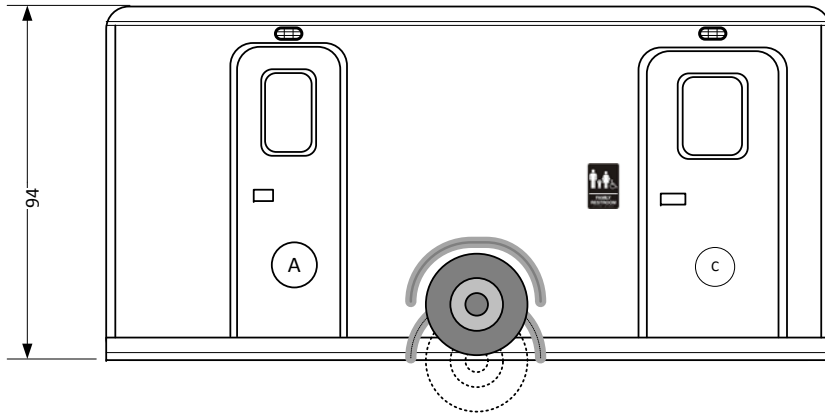
These restrooms are designed to be compliant with all current guidelines as we are aware of. Many guidelines have gray areas and points open to interpretation. Different entities may have differed interpretations or local differences. We suggest getting approvals of final plans from the authorities in the local the unit will be placed

This document is the property of and contains unpublished proprietary information and trade secrets of A.M.S. Global Inc. By accepting possession of the document the recipient agrees to make no copies transcriptions or any use of this document or the information contained herein except as authorized by A.M.S. Global Inc. and further agrees to safe keep this document and return in to A.M.S. Global Inc. upon demand.

Approved by _____



22,34547,788
10-09-18

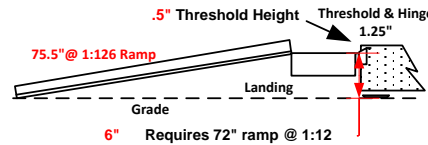
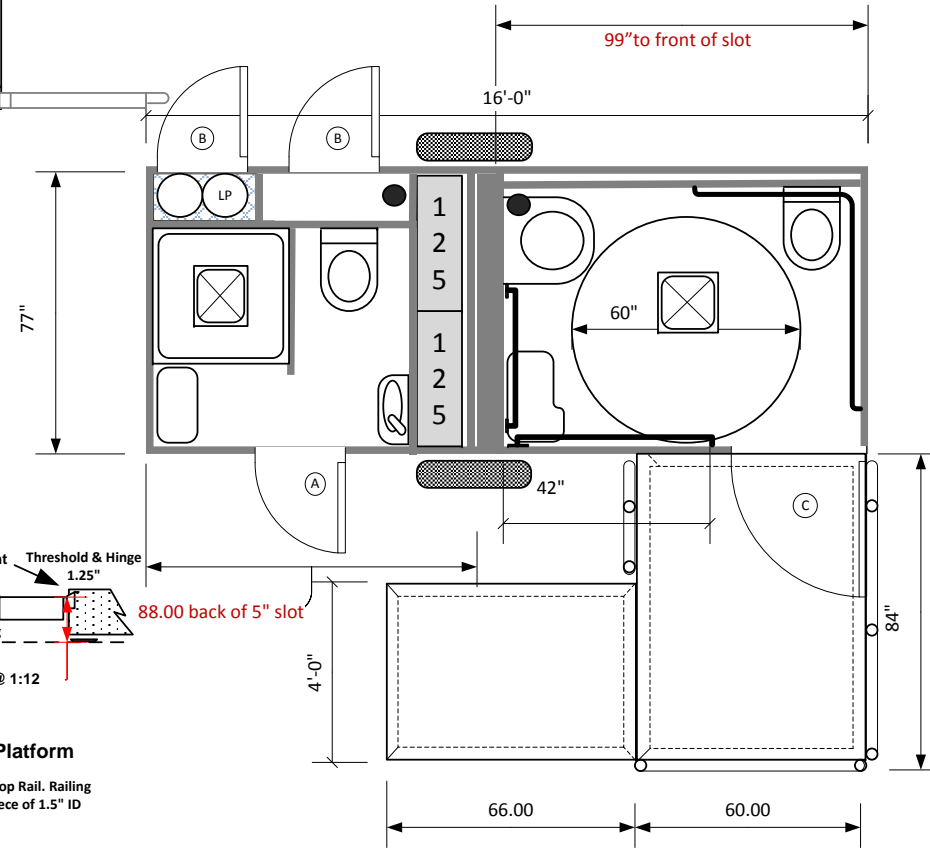


- Ⓐ 78"x24" radius RH
- Ⓑ 48"x24" radius LH
- Ⓒ 80"x 36" radius RH



Omega Lite 16 ADA 2STS

- ADA compliant to 2010 ADA Guidelines
- Lowers to ground
- Removeable trailer tongue
- Porcelain wall hung fixtures
- 250 gl tank storage Custom to your specifications
- Rotationally molded vertical tanks
- Stainless Steel Towel, tissue and soap dispensers
- Rubber coin over steel flooring Electric Brakes
- Obscure skylights in radius doors
- Vandal resistant pebble finished wall panels
- Double foil radiant barrier insulation
- Retractable TorFlex suspension
- 16 x 6.75 14 ply Radial Tires & Easy-Lube bearings
- All metal and composite construction
- LED 50,000 hour burn automatic lighting and trailer lighting
- Dawn to dusk LED porch lighting
- One 20 amp 120 ac power inlet
- Aluminum ADA ramp w/Stainless steel railing
- 2 Turbo Vent Fans Two 40# LP Tanks
- LP on demand water heater



Handrails Top Height 36" above Platform

Top of Cross Bars 14" below bottom of Top Rail. Railing 1.5" OD Diameter and slides into 4" piece of 1.5" ID pipe welded to landing.

These restrooms are designed to be compliant with all current guidelines as we are aware of. Many guidelines have gray areas and points open to interpretation. Different entities may have differed interpretations or local differences. We suggest getting approvals of final plans from the authorities in the local the unit will be placed

This document is the property of and contains unpublished proprietary information and trade secrets of A.M.S. Global Inc. By accepting possession of the document the recipient agrees to make no copies transcriptions or any use of this document or the information contained herein except as authorized by A.M.S. Global Inc. and further agrees to safe keep this document and return in to A.M.S. Global Inc. upon demand.

Approved by _____

