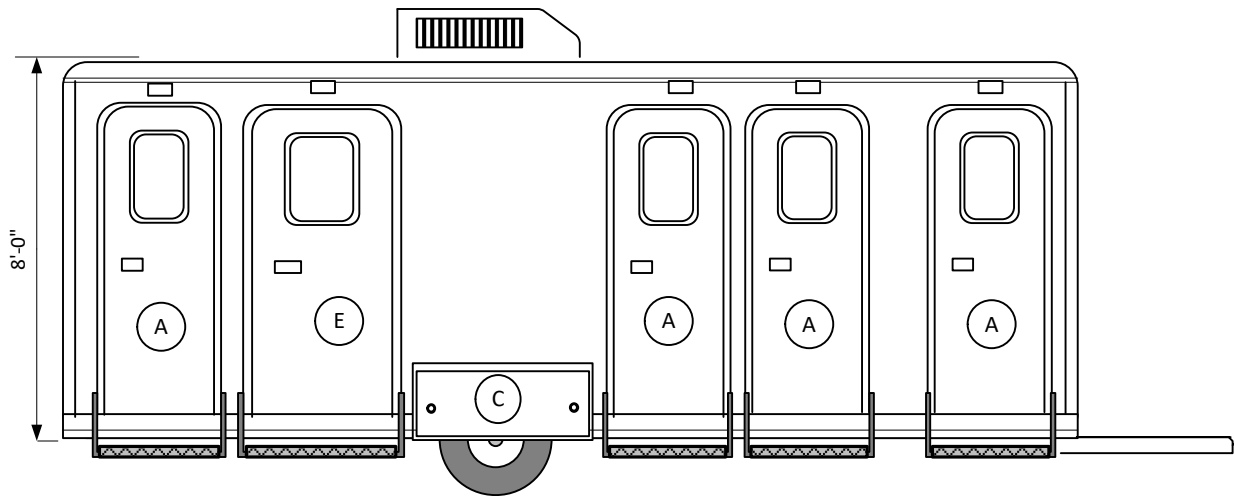


??????????????

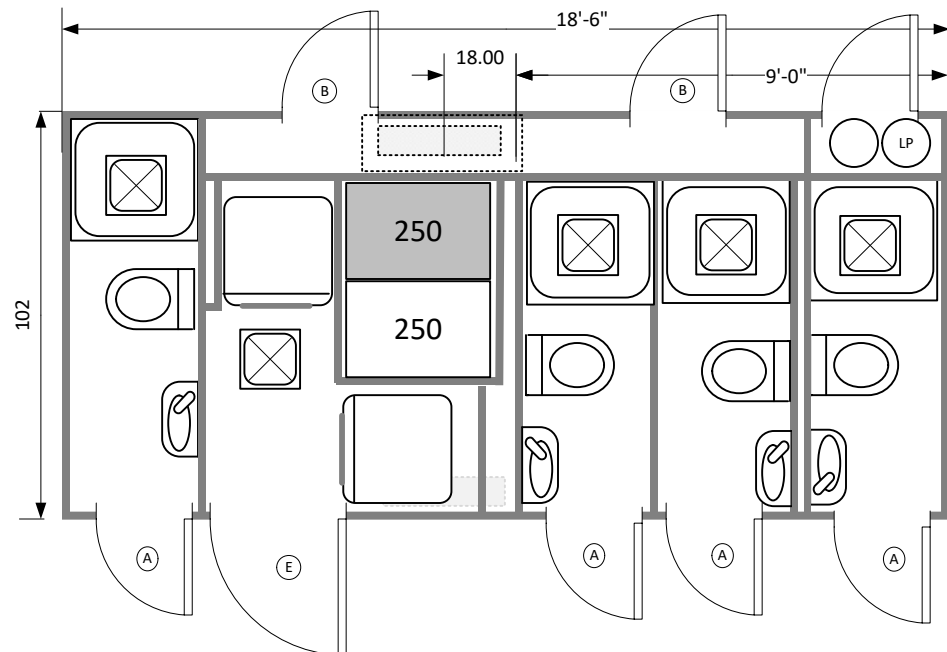
# APF 18 4STS 2WD



- Ⓐ 78"x24" radius RH
- Ⓑ 48"x24" radius LH
- Ⓒ 32"x49" top hinge
- Ⓓ 48"x24" radius RH
- Ⓔ 78"x32" radius RH
- Ⓕ 78"x24" radius LH
- Ⓖ 77.5"x35.5" radius LH

### Electric Brakes

- 240 v @ 50 amp power required
- LED 50,000 hour burn lighting and trailer lighting
- 4 LP heat on demand showers
- Four Jets toilets & 15MB Vacuumator
- Metered shower valves w/ vandal proof heads
- All stainless steel dispensers
- 4 wall hung sinks with metered faucets & mirrors
- 5 turbo vents & 15,000 btu AC
- SUBURBAN NT-20SQ 2450AGAS DUCTED FURNACE 19000BTU
- 5220 watts heat strip & 2 40# LP tanks
- Kenmore stacked LP washer & drier
- All metal and composite construction -- No Wood
- Estimated 20 yr or more life span
- .040 aluminium exterior
- 4 leveling jacks & 5 step landings
- Does not lower to ground
- Low Profile - close to ground



This document is the property of and contains unpublished proprietary information and trade secrets of A.M.S. Global Inc. By accepting possession of the document the recipient agrees to make no copies transcriptions or any use of this document or the information contained herein except as authorized by A.M.S. Global Inc. and further agrees to safe keep this document and return in to A.M.S. Global Inc. upon demand.

Approved by \_\_\_\_\_

